

Key Adjustable Chucks



MOTOR TYPE	CHUCK CAPACITY	CHUCK AND KEY
	ins	part no.
DM65-T	1/4	28942
	5/16	94502
	3/8	31132
HM-1900-4600 HM55-2100-18000	1/2	29142
HM-60-830 HM55-40-950	1/2	29122

Collet Chucks



MOTOR TYPE	LENGTH	DIA.	1	2
	ins	ins	part no	part no
DM65-T			26932	26942
HM-1900-4600 HM55-2100-18000	1.65	0.60	26932	26952

COLLETS							
ins	part no.	ins	part no.	ins	part no.	ins	part no.
0.031	2892	0.075	3002	0.118	3112	0.161	3222
0.035	2902	0.079	3012	0.122	3122	0.165	3232
0.039	2912	0.083	3022	0.126	3132	0.169	3242
0.043	2922	0.087	3032	0.130	3142	0.173	3252
0.047	2932	0.091	3042	0.134	3152	0.177	3262
0.051	2942	0.094	3052	0.138	3162	0.181	3272
0.055	2952	0.098	3062	0.142	3172	0.185	3282
0.059	2962	0.102	3072	0.146	3182	0.189	3292
0.063	2972	0.106	3082	0.150	3192	0.193	3302
0.067	2982	0.110	3092	0.154	3202	0.197	3312
0.071	2992	0.114	3102	0.157	3212		

Fixed Collet Drives



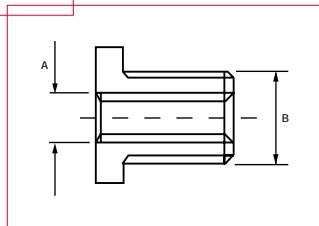
DIAMETER	MOTOR TYPE	LENGTH	DIA.	COLLET	NUT
		ins	ins	part no.	part no.
6mm	DM65-T	1.63	0.83	22362	22352
1/4"		1.63	0.83	22382	22352

Screwdriver Bit Adaptor



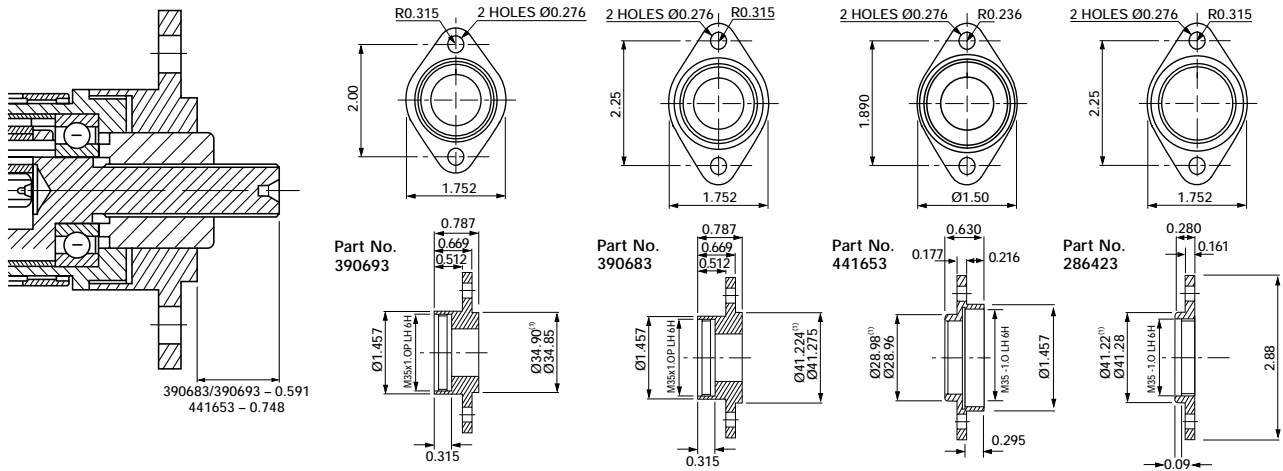
DRIVE	MOTOR TYPE	LENGTH	DIA.	
		ins	ins	part no.
5/16" fem.	DM65-T	1.38	0.5	27532

Thread Adaptor



MOTOR TYPE	A	B	
			part no.
DM65-T	3/8" x 24 UNF	1/2" x 20 UN	68143

Flange for DM6/65-T



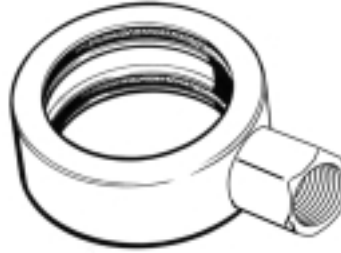
Part No. 390683 provides same mounting dimensions as DM - 17700/5300/4000/3000/1600
 Part No. 390693 provides same mounting dimensions as DM - 900/500/210/80/40
 Part No. 441653 provides same mounting dimensions as DM6 and DM65 motors

(1) Dimensions in mm

Exhaust Collector Ring for HM Series



Part No. 43093

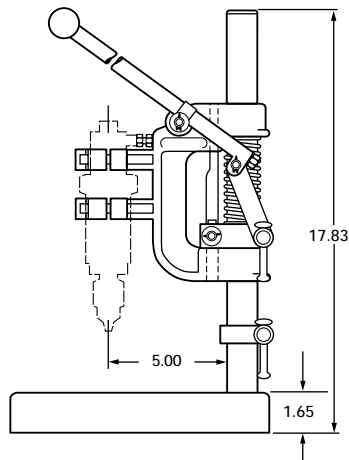


Part No. 72163

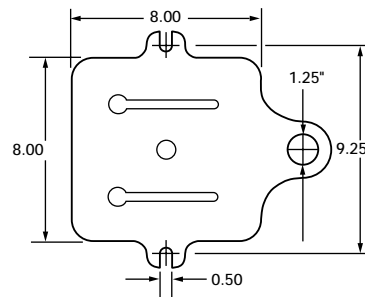
CONNECTION	PART NO.
Ø15mm barb	43093
3/8" BSP Female	72163

Stands

R55 Lever Operated Stand for HM Series



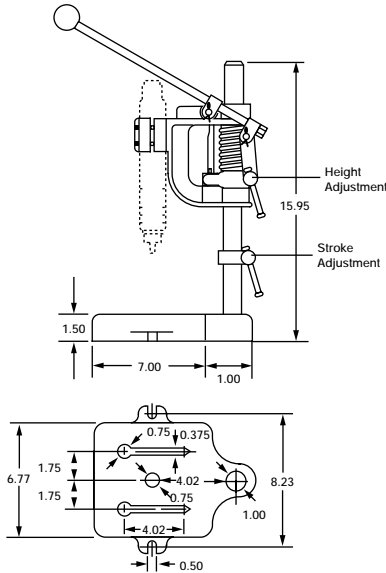
Part No. 903304



Note: Motor must be fitted with exhaust collector ring (see above)

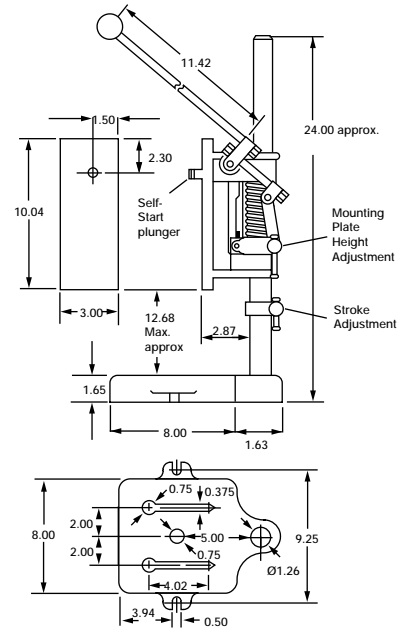
D54 Lever-Operated Stand For DM6, DM65 and 2DM6 Motor

Part No. 901944
Weight: 15.4 lbs
Max. Stroke: 1.77 ins



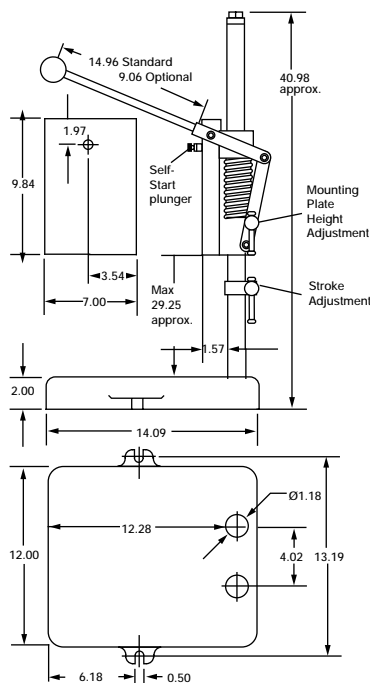
R55-S Lever-Operated Stand

Part No. 903644
Weight: 24.9 lbs
Max. Stroke: 2.24 ins
Max. Mounting Plate Load: 13.2 lbs



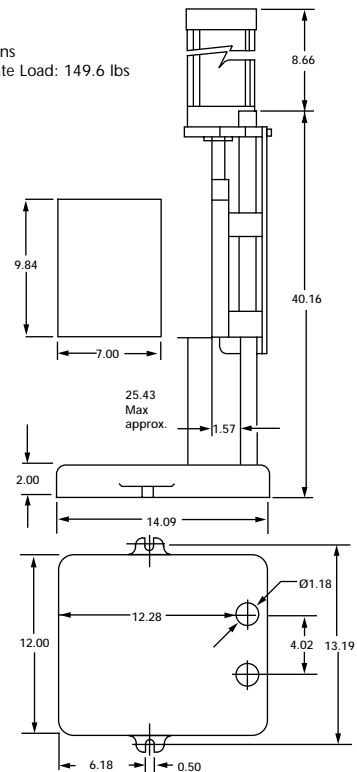
M55A Lever-Operated Stand With Linear Bearings

Part No. 902594
Weight: 35.2 lbs
Max. Stroke: 2.56 ins
Max. Mounting Plate Load: 15.95 lbs



MC55 Cylinder-Operated Stand With Linear Bearings

Part No. 902914
Weight: 70.4 lbs
Max. Stroke: 3.94 ins
Max. Mounting Plate Load: 149.6 lbs



Operating the Motor

To obtain the longest life span of the vane type air motor, it is recommended that a clean, dry supply of air in sufficient quantity is supplied, with an automatic lubrication system to provide the correct amount of lubrication to the air motor at all times.

Controlling the motor can be achieved using pneumatic valves, either hand, foot, pilot air or solenoid operated. The valve used must have full flow capability to ensure unrestricted air flow to the motor.

Torque is controlled by changing the pressure, speed by air flow.

A Typical Control Circuit

