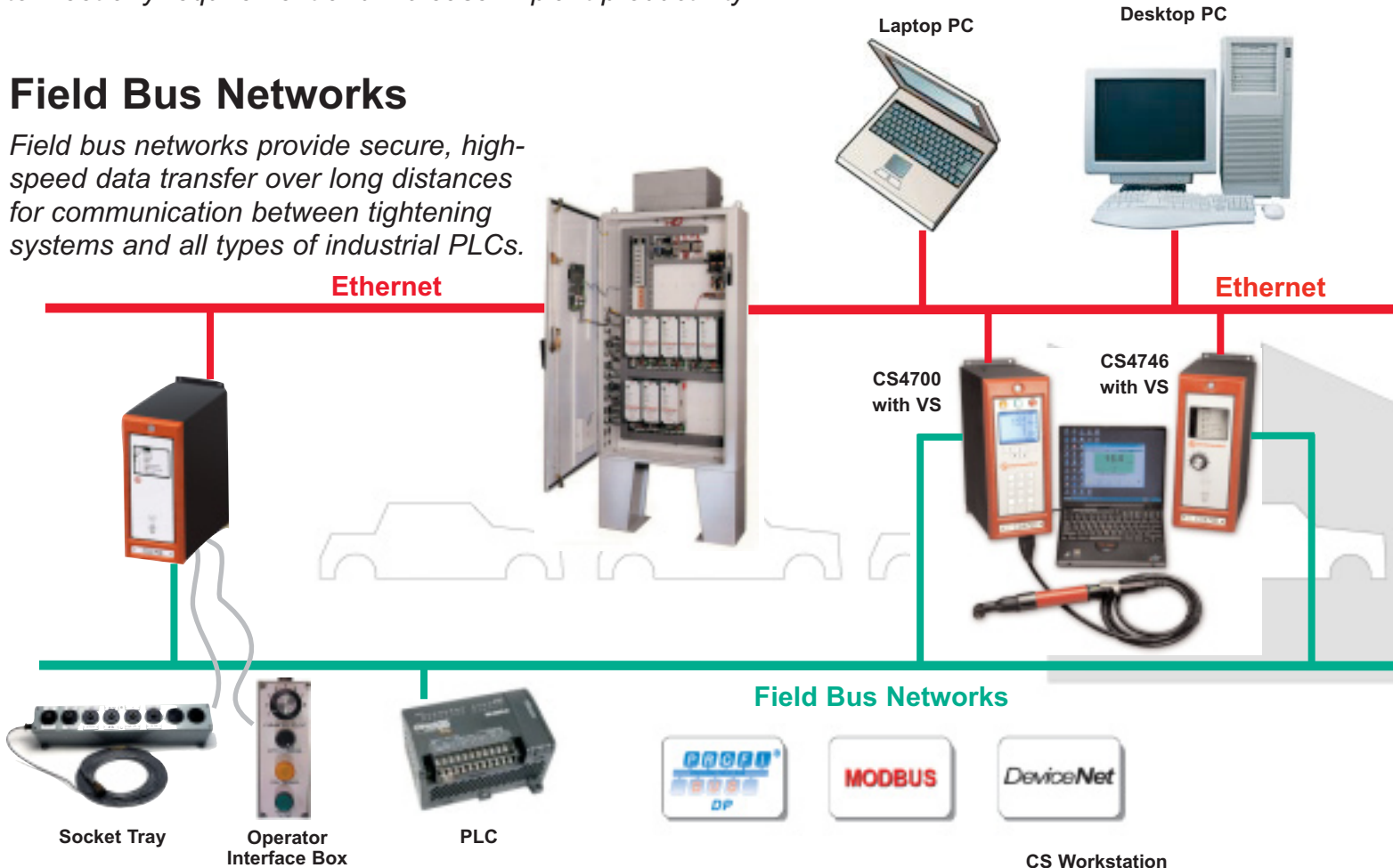


CS Networks

CS Controller Networks can be configured for any variety of Ethernet, field bus, and PLC communication, including peripherals such as printers, bar code scanners, light towers, and socket trays to meet any requirement and increase in-plant productivity.

Field Bus Networks

Field bus networks provide secure, high-speed data transfer over long distances for communication between tightening systems and all types of industrial PLCs.



All CS controller I/O can be used over networks.

More than 20 Inputs, including:

- Batch/Sequence Abort
- Bypass Barcode Requirement
- Clear barcode, outputs
- Cycle Enable, On and Stop
- Enable Barcode Comport
- GM Error proofing ready
- Manual calibration
- Parameter Set Select Bit 0, 1, 2, 3, 4
- Release One Job
- Reject Lockout Clear
- Sequence Enable, Interlock, Step Advance, Abort
- Sequence Select Bit 0, 1, 2

More than 80 Outputs, including:

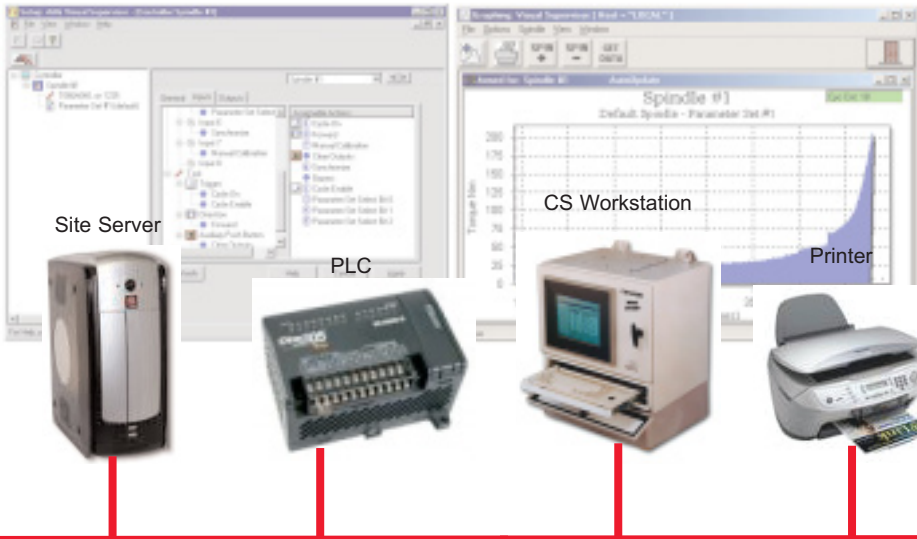
- Always On/Asserted
- Angles 1 & 2, High and Low
- Auxiliary push button
- Backout with torque
- Barcode lockout & outputs
- Batch complete, OK
- Cycle bad, declared, finished, good, timed out
- GM green, red and yellow light functions and stack alarm
- Final angle low
- In cycle
- Invalid pset, sequence selected
- Motor locked rotor, overtemperature
- No rotation during cycle
- No tool attached
- Offset failure, warning
- Peak torque high, low
- PM recommended
- Prevailing torque high, low, monitor incomplete

CS Workstation



CS5000 with Built-in PC





Ethernet Networks

Ethernet availability in all CS2700, CS4700 and CS4746 Controllers enables multi-directional communication between the controller and any specified PC or PLC.

Ethernet

Advantages of an Ethernet link:

- High speed data transfer
- Packet control to prevent loss of information
- Long-distance data transfer
- Standard RJ45 connector
- Multi-application connection on the same cable
- Theoretically no limit to the number of connected controllers

Barcode Scanner

CS2700 with VS

CS2700 and SD25



Field Bus Networks

SDLC Networks

CS4700

CS4746

CS2700

SDLC



SDLC

CS Controllers can also send and retrieve digital data:

- Send out part ID, model ID, VIN, barcode
- Retrieve bar code / results / Torque+ Angle+ Date+ Time+ Report and more!

Advantages of an SDLC link:

- High speed, long-distance data transfer
- Packet control to prevent loss of information
- Standard 10-pin RS-485 connector
- Multi-application connection on the same cable
- As many as 32 connected controllers

CONTROLLER OPTION KITS

CS2700/4746/4700 Ethernet Option (for basic models only)¹

CS2700/4746/4700 Devicenet Option²

CS2700/4746/4700 Profibus DPV1 Option²

CS2700/4746/4700 Modbus TCP/Ethernet IP Option²

CS2700/4746/4700 PFCS/Terminal Server Option²

MODEL

244700KETHN051

244700KDNET054

244700KPBUS058

244700KMTCP05A

244700KPFCSB51

CP PART NUMBER

615 004 138 7

615 004 138 8

615 004 138 9

615 004 139 0

615 004 139 1

¹Ethernet is already installed on Advanced controllers with keypad/display so this option is not required.

²When this option is selected, the Ethernet option¹ must also be ordered.

Contact your CP Representative for more information.

