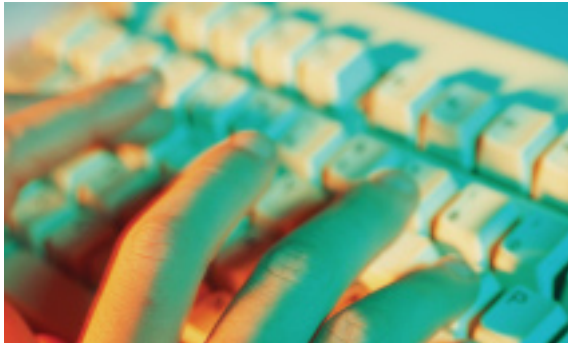



# CVIP2000 Software

## Program Parameters and Monitor Data



CVI PC2000 software (Windows compatible) is a user friendly tool able to program tightening cycles, collect and display results and curves from all  tightening controllers in real time.

The Advanced network version allows the connection of up to 32 controllers in RS422 mode and many more through an Ethernet link.

### Real time control mode

- Display all stations connected
- Display and save results
- Display tightening reports
- Print results after each tightening or from date to date

### Programming mode

- General parameters of controllers: peripherals, fieldbuses, Ethernet,
- Tightening cycles, up to 250
- Electric brushless tool features
- Downloading of all parameters to stations

### Statistical analysis mode

- Standards: ISO, CNOMO, NF
- Display and print:
  - Histograms
  - SPC
  - Control charts, mean, range, standard deviation

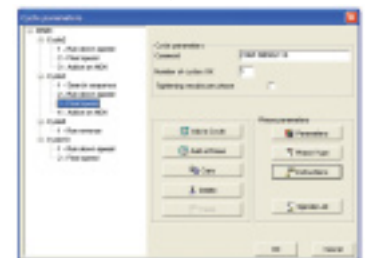
### Maintenance mode

- Access to tool counters, partial number of cycles and total number of cycles performed by the tool
- Test mode to check torque transducer, angle encoder, brushless motor, etc...
- Complete backup/restore of Stations



Displaying of all stations programmed  
Access to main functions with soft key

### Friendly Interface



Cycles and phases programming mode

### Easy Control



From torque control up to yield point strategy

### Complete Statistical Package



MODEL	PART NUMBER
CVIS/CVIC PC2000 1 install	615 927 521 0
CVIS/CVIC PC2000 5 install	615 927 534 0
CVIS/CVIC PC2000 25 install	615 927 536 0

MODEL	PART NUMBER
CVI PC2000 standard 1 install	615 927 522 0
CVI PC2000 standard 5 install	615 927 526 0
CVI PC2000 standard 25 install	615 927 537 0

MODEL	PART NUMBER
CVI PC2000 advance 1 install	615 927 523 0
CVI PC2000 advance 5 install	615 927 535 0
CVI PC2000 advance 25 install	615 927 538 0

