

# Speciality Tools

## Offset Angle Head

### Introduction

Offset Angle Heads are used to provide solutions to drill holes in areas where access is very limited.

Two types of offset angle head module (standard and extended reach) suitable for mounting to the D23 (straight and pistol versions) drill are available.

**To order please ensure that you list both the D23 Drill plus the Offset Angle Head to suit your requirements.**

e.g.: **D23-P-700 + Standard reach Part No. 108302**

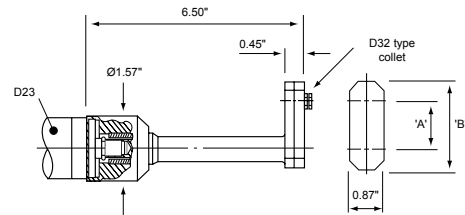


Vibration level: <math><2.5 \text{ m/s}^2</math>

PICTURE REF	MODEL	PART NUMBER	FREE SPEED	CHUCK SIZE		MOTOR POWER	STALL TORQUE	WEIGHT		LENGTH	AIR FLOW	AIR INLET	MIN HOSE BORE		SOUND LEVEL
			r/min	in.	mm	kW	Nm	lb	kg	mm	cfm	BSP/NPT	in.	mm	dB(A)
<b>PISTOL GRIP DRILLS – TRIGGER START – D SERIES</b>															
•	D23-P-6000	1364374	6000	0.315	8.0	0.28	2.0	1.98	0.90	175	18	1/4	3/8	10	78
•	D23-P-4600	1364454	4600	0.315	8.0	0.28	2.0	1.98	0.90	175	18	1/4	3/8	10	78
•	D23-P-2900	1364534	2900	0.315	8.0	0.28	3.0	1.98	0.90	175	18	1/4	3/8	10	78
•	D23-P-1800	1364794	1800	0.315	8.0	0.28	5.0	2.42	1.10	197	18	1/4	3/8	10	78
•	D23-P-1100	1364874	1100	0.315	8.0	0.28	9.0	2.42	1.10	197	18	1/4	3/8	10	78
•	D23-P-700	1364954	700	0.315	8.0	0.28	15.0	2.42	1.10	197	18	1/4	3/8	10	78
•	D23-P-400	1365004	400	0.315	8.0	0.28	24.0	2.42	1.10	197	18	1/4	3/8	10	78
<b>STRAIGHT GRIP DRILLS – LEVER START – D SERIES</b>															
•	D23-L-5700	1362914	5700	0.315	8.0	0.28	2.0	1.54	0.70	218	20	1/4	3/8	10	77
•	D23-L-4400	1363144	4400	0.315	8.0	0.28	2.0	1.54	0.70	218	20	1/4	3/8	10	77
•	D23-L-2800	1363304	2800	0.315	8.0	0.28	3.0	1.85	0.84	218	20	1/4	3/8	10	77
•	D23-L-1750	1363564	1750	0.315	8.0	0.28	6.0	1.85	0.84	240	20	1/4	3/8	10	77
•	D23-L-1050	1363724	1050	0.315	8.0	0.28	10.0	1.85	0.84	240	20	1/4	3/8	10	77
•	D23-L-400	1363984	400	0.315	8.0	0.28	25.0	1.85	0.84	240	20	1/4	3/8	10	77
<b>STRAIGHT GRIP DRILLS – BUTTON START – D SERIES</b>															
•	D23-S-4400	1363064	4400	0.315	8.0	0.28	2.0	1.54	0.70	218	20	1/4	3/8	10	77
•	D23-S-2800	1363224	2800	0.315	8.0	0.28	3.0	1.54	0.70	218	20	1/4	3/8	10	77
•	D23-S-1750	1363484	1750	0.315	8.0	0.28	6.0	1.85	0.84	240	20	1/4	3/8	10	77
•	D23-S-1050	1363644	1050	0.315	8.0	0.28	10.0	1.85	0.84	240	20	1/4	3/8	10	77
•	D23-S-400	1363804	400	0.315	8.0	0.28	25.0	1.85	0.84	240	20	1/4	3/8	10	77

# Accessories

Angle Head	A		B		Part No.
	in.	mm	in.	mm	
Standard reach	1.10	28	2.32	59	<b>108302</b>
Extended reach	1.97	50	3.07	78	<b>108312</b>



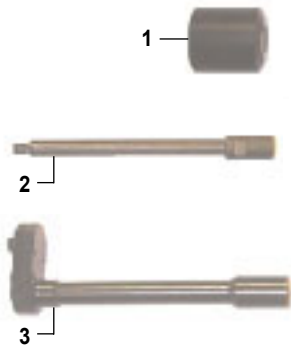
## OFFSET ANGLE HEAD

### ACCESSORIES

ITEM	PART NO.
A Offset Angle Head – Standard reach	<b>108302</b>
B Offset Angle Head – Extended reach	<b>108312</b>
• Service kits (standard reach) – gears and bearings set	<b>461273</b>
• Service kits (extended reach) – gears and bearings set	<b>461283</b>

### Offset Angle Head components

ITEM	
1	Mounting block
2	Drive spindle
3	Offset Angle Head body



To fit the offset angle head to a D23 drill the chuck guard and chuck should be removed; the drive spindle is then fitted followed by the mounting block. The offset angle head body is then engaged with the drive shaft and secured to the mounting block by means of set screws.

The head may be rotated through 360° to the desired orientation prior to securing to the mounting block.

The drill bit is held by means of a standard collet (D32 type).