

Screwdrivers – Shut Off HLT

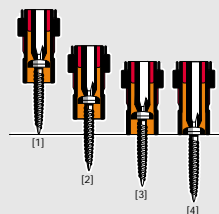


PICTURE REF	TOOL TYPE	PART NUMBER	FREE SPEED	OUTPUT	TORQUE RANGE	FITTED SPRING	LENGTH	WEIGHT	AIR FLOW	AIR HOSE BORE	AIR INLET ⁽¹⁾	SOUND LEVEL	VIBRATION
			r/min	hex	Nm	Nm	mm	kg	l/s	mm	BSP	dB(A)	ms ⁻²
A	SC009-L1600-HLT4M	1459644	1600	1/4"	0.4-0.9	0.4-0.9	286	0.79	7	6	1/8"	73	<2.5
A	SC021-L1600-HLT4M	1459614	1600	1/4"	0.6-2.1	0.6-2.1	286	0.79	7	6	1/8"	73	<2.5
A	SC022-L1100-HLT4M	1459654	1100	1/4"	0.4-2.2	0.4-2.2	286	0.79	7	6	1/8"	73	<2.5
A	SC022-L550-HLT4M	1459664	550	1/4"	0.4-2.2	0.4-2.2	286	0.79	7	6	1/8"	73	<2.5
A	SC043-L1100-HLT4M	1459624	1100	1/4"	0.9-4.3	0.9-4.3	286	0.79	7	6	1/8"	73	<2.5
A	SC047-L550-HLT4M	1459634	550	1/4"	0.9-4.7	0.9-4.7	286	0.79	7	6	1/8"	73	<2.5
B	SCP009-T1600-HLT4M	1459704	1600	1/4"	0.4-0.9	0.4-0.9	245	1.0	7	6	1/8"	73	<2.5
B	SCP021-T1600-HLT4M	1459714	1600	1/4"	0.6-2.1	0.6-2.1	245	1.0	7	6	1/8"	73	<2.5
B	SCP022-T1100-HLT4M	1459724	1100	1/4"	0.4-2.2	0.4-2.2	245	1.0	7	6	1/8"	73	<2.5
B	SCP043-T1100-HLT4M	1459734	1100	1/4"	0.9-4.3	0.9-4.3	245	1.0	7	6	1/8"	73	<2.5
B	SCP022-T550-HLT4M	1459744	550	1/4"	0.4-2.2	0.4-2.2	245	1.0	7	6	1/8"	73	<2.5
B	SCP047-T550-HLT4M	1459754	550	1/4"	0.9-4.7	0.9-4.7	245	1.0	7	6	1/8"	73	<2.5

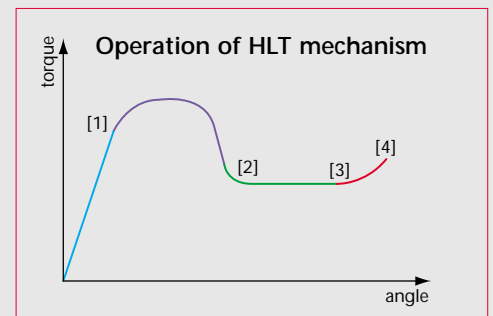
⁽¹⁾ NPT optional

TYPICAL HLT CYCLE

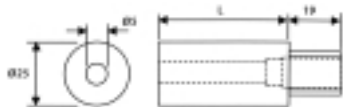
- 1 Tool starts to cut/form thread – direct drive
- 2 Thread is cut/formed, rundown continues – direct drive
- 3 Depth stop touches component, drive engages clutch
- 4 Final torque achieved, clutch operates and air supply is shut off



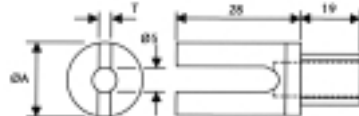
Depth stop changes tool from direct drive to clutch operation



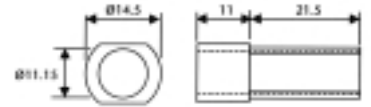
C



D



E



DEPTH STOPS

PICTURE REF	PART NUMBER	LENGTH
		mm
C	440833	28
C	440843	48
C	440853	127

PICTURE REF	PART NUMBER	T	ØA
		mm	mm
D	440863*	5	25
D	440873	3	15

* Supplied with tools

PICTURE REF	PART NUMBER	MATERIAL
E	432533	Steel
E	445623	Composite