

Screwdrivers – Shut Off HLT



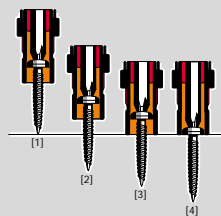
Lou Zampini & Associates
 2 Douglas Pike, Rt. 7
 Smithfield, RI 02917
 1 800 353 4676
 FAX 1 401 679 0165

PICTURE REF	TOOL TYPE	PART NUMBER	FREE SPEED	OUTPUT	TORQUE RANGE	FITTED SPRING	LENGTH	WEIGHT	AIR FLOW	AIR HOSE BORE	AIR INLET ⁽¹⁾	SOUND LEVEL	VIBRATION
			r/min	hex	in lb	in lb	ins	lb	scfm	ins	NPT	dB(A)	ms ²
A	SC009-L1600-HLT4M	1459644	1600	1/4"	3.5-8.0	3.5-8.0	11.3	1.74	14.8	1/4"	1/8"	73	<2.5
A	SC021-L1600-HLT4M	1459614	1600	1/4"	5.3-18.6	5.3-18.6	11.3	1.74	14.8	1/4"	1/8"	73	<2.5
A	SC022-L1100-HLT4M	1459654	1100	1/4"	3.5-19.4	3.5-19.4	11.3	1.74	14.8	1/4"	1/8"	73	<2.5
A	SC022-L550-HLT4M	1459664	550	1/4"	3.5-19.4	3.5-19.4	11.3	1.74	14.8	1/4"	1/8"	73	<2.5
A	SC043-L1100-HLT4M	1459624	1100	1/4"	8.0-38.0	8.0-38.0	11.3	1.74	14.8	1/4"	1/8"	73	<2.5
A	SC047-L550-HLT4M	1459634	550	1/4"	8.0-41.5	8.0-41.5	11.3	1.74	14.8	1/4"	1/8"	73	<2.5
B	SCP009-T1600-HLT4M	1459704	1600	1/4"	3.5-8.0	3.5-8.0	9.6	2.20	14.8	1/4"	1/8"	73	<2.5
B	SCP021-T1600-HLT4M	1459714	1600	1/4"	5.3-18.6	5.3-18.6	9.6	2.20	14.8	1/4"	1/8"	73	<2.5
B	SCP022-T1100-HLT4M	1459724	1100	1/4"	3.5-19.4	3.5-19.4	9.6	2.20	14.8	1/4"	1/8"	73	<2.5
B	SCP043-T1100-HLT4M	1459734	1100	1/4"	8.0-38.0	8.0-38.0	9.6	2.20	14.8	1/4"	1/8"	73	<2.5
B	SCP022-T550-HLT4M	1459744	550	1/4"	3.5-19.4	3.5-19.4	9.6	2.20	14.8	1/4"	1/8"	73	<2.5
B	SCP047-T550-HLT4M	1459754	550	1/4"	8.0-41.5	8.0-41.5	9.6	2.20	14.8	1/4"	1/8"	73	<2.5

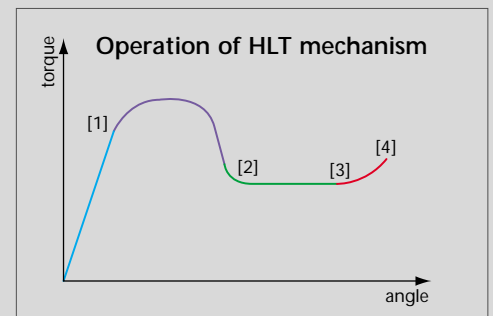
⁽¹⁾ BSP optional

TYPICAL HLT CYCLE

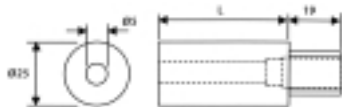
- 1 Tool starts to cut/form thread – direct drive
- 2 Thread is cut/formed, rundown continues – direct drive
- 3 Depth stop touches component, drive engages clutch
- 4 Final torque achieved, clutch operates and air supply is shut off



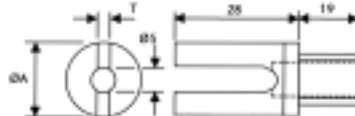
Depth stop changes tool from direct drive to clutch operation



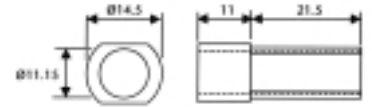
C



D



E



DEPTH STOPS

PICTURE REF	PART NUMBER	LENGTH
		mm
C	440833	28
C	440843	48
C	440853	127

PICTURE REF	PART NUMBER	T	ØA
		mm	mm
D	440863*	5	25
D	440873	3	15

* Supplied with tools

PICTURE REF	PART NUMBER	MATERIAL
E	432533	Steel
E	445623	Composite