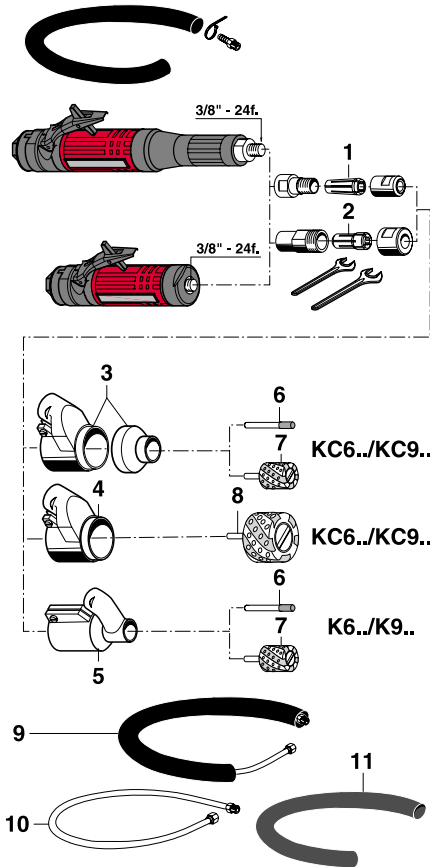
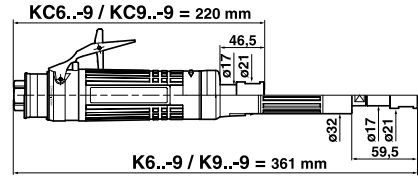
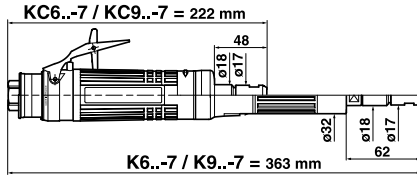


Accessories



K6..- / K9..- / KC6..- / KC9..-

ACCESSORIES INCLUDED

ITEM	COLLET CNOMO	COLLET SERIES 200
1 CNOMO collet ø 6 mm	615 526 049 0	
2 Series 200 resilient collet, ø 5.55 to 6.35 mm (1/4")		615 526 063 0
• Exhaust hose L = 1.5 m (60")	615 875 113 0	615 875 113 0
• Clamp	615 873 415 0	615 873 415 0
• 3/8" air hose nipple for 10 mm ID hose	615 704 017 0	615 704 017 0
• Flat wrench 14 mm	615 801 005 0	615 801 005 0
• Flat wrench 19 mm (3/4")		615 801 076 0

OPTIONAL ACCESSORIES

ITEM	K6../K9..-	KC6../KC9..
3 Suction cap		615 396 013 0
4 Suction cap		615 396 023 0
5 Suction cap	615 396 014 0	
6 Diamond burr ø 7.2 mm, shank ø 6 mm (28 000 rpm max)	615 860 051 0	615 860 051 0
7 Diamond cylinder ø 27 mm, shank ø 6 mm (20 000 rpm max)	615 860 003 0	615 860 003 0
8 Diamond cylinder ø 52 mm, shank ø 6 mm (15 000 rpm max)		615 860 004 0

OTHER OPTIONAL ACCESSORIES

ITEM	PART NO.
9 Complete silencer kit	615 396 166 0
10 Inlet hose assembly L = 1.7 m (67") 3/8"M - 3/8"F - ø 10 mm	615 870 210 0
11 Reinforced cloth-lined exhaust hose L = 0.75 m (30")	615 875 116 0

Lou Zampini & Associates
37 Conifer Drive
North Providence, RI 02904
401 354 8878 FAX 401 353 0113
<http://www.desouttertools.com>

