

Screwdrivers – Shut Off HLT

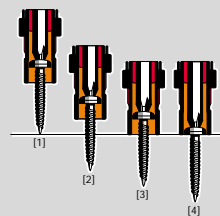


| PICTURE REF | TOOL TYPE | PART NUMBER | FREE SPEED | OUTPUT | TORQUE RANGE | FITTED SPRING | LENGTH | WEIGHT | AIR FLOW | AIR HOSE BORE | AIR INLET ⁽¹⁾ | SOUND LEVEL | VIBRATION |
|-------------|--------------------|-------------|------------|--------|--------------|---------------|--------|--------|----------|---------------|--------------------------|-------------|-----------------|
| | | | r/min | hex | in lb | in lb | ins | lb | scfm | ins | NPT | dB(A) | ms ² |
| A | SC009-L1600-HLT4M | 1459644 | 1600 | 1/4" | 3.5-8.0 | 3.5-8.0 | 11.3 | 1.74 | 14.8 | 1/4" | 1/8" | 73 | <2.5 |
| A | SC021-L1600-HLT4M | 1459614 | 1600 | 1/4" | 5.3-18.6 | 5.3-18.6 | 11.3 | 1.74 | 14.8 | 1/4" | 1/8" | 73 | <2.5 |
| A | SC022-L1100-HLT4M | 1459654 | 1100 | 1/4" | 3.5-19.4 | 3.5-19.4 | 11.3 | 1.74 | 14.8 | 1/4" | 1/8" | 73 | <2.5 |
| A | SC022-L550-HLT4M | 1459664 | 550 | 1/4" | 3.5-19.4 | 3.5-19.4 | 11.3 | 1.74 | 14.8 | 1/4" | 1/8" | 73 | <2.5 |
| A | SC043-L1100-HLT4M | 1459624 | 1100 | 1/4" | 8.0-38.0 | 8.0-38.0 | 11.3 | 1.74 | 14.8 | 1/4" | 1/8" | 73 | <2.5 |
| A | SC047-L550-HLT4M | 1459634 | 550 | 1/4" | 8.0-41.5 | 8.0-41.5 | 11.3 | 1.74 | 14.8 | 1/4" | 1/8" | 73 | <2.5 |
| B | SCP009-T1600-HLT4M | 1459704 | 1600 | 1/4" | 3.5-8.0 | 3.5-8.0 | 9.6 | 2.20 | 14.8 | 1/4" | 1/8" | 73 | <2.5 |
| B | SCP021-T1600-HLT4M | 1459714 | 1600 | 1/4" | 5.3-18.6 | 5.3-18.6 | 9.6 | 2.20 | 14.8 | 1/4" | 1/8" | 73 | <2.5 |
| B | SCP022-T1100-HLT4M | 1459724 | 1100 | 1/4" | 3.5-19.4 | 3.5-19.4 | 9.6 | 2.20 | 14.8 | 1/4" | 1/8" | 73 | <2.5 |
| B | SCP043-T1100-HLT4M | 1459734 | 1100 | 1/4" | 8.0-38.0 | 8.0-38.0 | 9.6 | 2.20 | 14.8 | 1/4" | 1/8" | 73 | <2.5 |
| B | SCP022-T550-HLT4M | 1459744 | 550 | 1/4" | 3.5-19.4 | 3.5-19.4 | 9.6 | 2.20 | 14.8 | 1/4" | 1/8" | 73 | <2.5 |
| B | SCP047-T550-HLT4M | 1459754 | 550 | 1/4" | 8.0-41.5 | 8.0-41.5 | 9.6 | 2.20 | 14.8 | 1/4" | 1/8" | 73 | <2.5 |

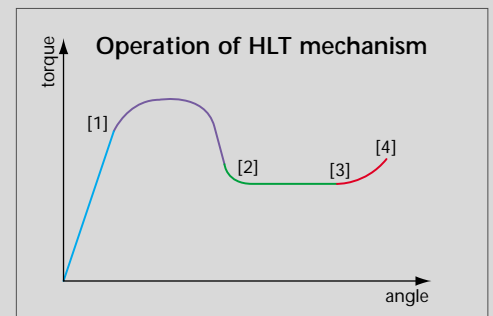
⁽¹⁾ BSP optional

TYPICAL HLT CYCLE

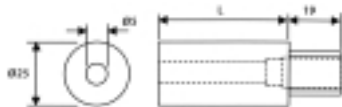
- 1 Tool starts to cut/form thread – direct drive
- 2 Thread is cut/formed, rundown continues – direct drive
- 3 Depth stop touches component, drive engages clutch
- 4 Final torque achieved, clutch operates and air supply is shut off



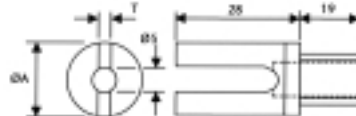
Depth stop changes tool from direct drive to clutch operation



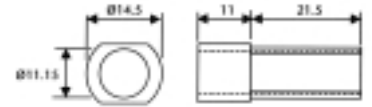
C



D



E



DEPTH STOPS

| PICTURE REF | PART NUMBER | LENGTH |
|-------------|-------------|--------|
| | | mm |
| C | 440833 | 28 |
| C | 440843 | 48 |
| C | 440853 | 127 |

| PICTURE REF | PART NUMBER | T | ØA |
|-------------|-------------|----|----|
| | | mm | mm |
| D | 440863* | 5 | 25 |
| D | 440873 | 3 | 15 |

* Supplied with tools

| PICTURE REF | PART NUMBER | MATERIAL |
|-------------|-------------|-----------|
| E | 432533 | Steel |
| E | 445623 | Composite |

Lou Zampini & Associates

2 Douglas Pike, Rt. 7
Smithfield, RI 02917
1 800 353 4676
FAX 1 401 679 0165

