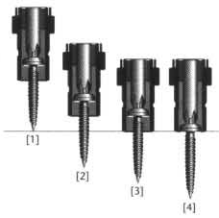


## SC Series HLT



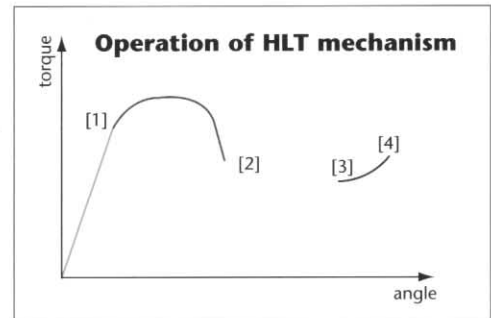
- The HLT tools solve the problem of the final torque being lower than the driving torque
- Shut off control
- Pistol and lever versions
- Torque Ranges 3.5-41 lbf ins
- Dryline™ operation
- Magnet bit holder included
- A range of depth stops are available to suit the application

### Depth stop changes tool from direct drive to clutch operation



### Typical HLT Cycle

- 1 Tool starts to cut/form thread - direct drive
- 2 Thread is cut/formed, rundown continues - direct drive
- 3 Depth stop touches component, drive engages clutch
- 4 Final torque achieved, clutch operates and air supply is shut off



### Lever start – shut off – HLT

#### Specification

TOOL TYPE	PART NUMBER	FREE SPEED	OUTPUT	TORQUE RANGE	LENGTH	WEIGHT	AIR FLOW	AIR HOSE BORE	AIR INLET <sup>(1)</sup>	SOUND LEVEL	VIBRATION
		r/min	hex	lbf ins	ins	lb	scfm	ins	NPT	dB(A)	ms <sup>-2</sup>
SC009-L1600-HLT4M	1459644	1600	1/4"	3.5-8.0	11.3	1.74	14.8	1/4"	1/8"	73	<2.5
SC021-L1600-HLT4M	1459614	1600	1/4"	5.3-18.6	11.3	1.74	14.8	1/4"	1/8"	73	<2.5
SC022-L1100-HLT4M	1459654	1100	1/4"	3.5-19.5	11.3	1.74	14.8	1/4"	1/8"	73	<2.5
SC022-L550-HLT4M	1459664	550	1/4"	3.5-19.5	11.3	1.74	14.8	1/4"	1/8"	73	<2.5
SC043-L1100-HLT4M	1459624	1100	1/4"	8.0-38.0	11.3	1.74	14.8	1/4"	1/8"	73	<2.5
SC047-L550-HLT4M	1459634	550	1/4"	8.0-41.0	11.3	1.74	14.8	1/4"	1/8"	73	<2.5

### Trigger start – shut off – HLT

#### Specification

TOOL TYPE	PART NUMBER	FREE SPEED	OUTPUT	TORQUE RANGE	LENGTH	WEIGHT	AIR FLOW	AIR HOSE BORE	AIR INLET <sup>(1)</sup>	SOUND LEVEL	VIBRATION
		r/min	hex	lbf ins	ins	lb	scfm	ins	NPT	dB(A)	ms <sup>-2</sup>
SCP009-T1600-HLT4M	1459704	1600	1/4"	3.5-8.0	9.6	2.21	14.8	1/4"	1/8"	73	<2.5
SCP021-T1600-HLT4M	1459714	1600	1/4"	5.3-18.6	9.6	2.21	14.8	1/4"	1/8"	73	<2.5
SCP022-T1100-HLT4M	1459724	1100	1/4"	3.5-19.5	9.6	2.21	14.8	1/4"	1/8"	73	<2.5
SCP043-T1100-HLT4M	1459734	1100	1/4"	8.0-38.0	9.6	2.21	14.8	1/4"	1/8"	73	<2.5
SCP022-T550-HLT4M	1459744	550	1/4"	3.5-19.5	9.6	2.21	14.8	1/4"	1/8"	73	<2.5
SCP047-T550-HLT4M	1459754	550	1/4"	8.0-41.0	9.6	2.21	14.8	1/4"	1/8"	73	<2.5

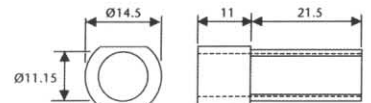
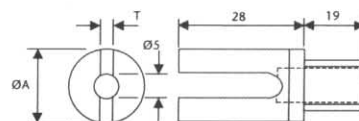
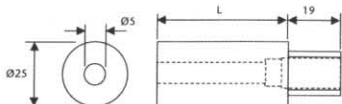
<sup>(1)</sup> 1/8" BSP optional

### Depth Stops

PART NUMBER	LENGTH
	mm
440833	28
440843	48
440853	127

PART NUMBER	T	øA
	mm	mm
440863*	5	25
440873	3	15

PART NUMBER	MATERIAL
432533	Steel
445623	Composite



\* Supplied with tools

Dimensions in mm