

Desoutter



Desoutter Limited. London NW9 6ND

B Series

(GB) Servicing Instructions
Parts List
Operating Instructions

(D) Wartungsanleitung
Teilleiste
Bedienungsanleitung

(F) Manuel d'entretien
Liste de pièces
Manuel d'utilisation

(E) Instrucciones de Servicio
Listas de Repuestos
Instrucciones de Operación

(P) Instruções de Manutenção
Listas de Peças
Instruções de Funcionamento

(I) Istruzioni per la Manutenzione
Elenco delle Parti
Istruzioni Operative

(GR) Οδηγίες Συντήρησης
Κατάλογοι Ανταλλακτικών
Οδηγίες Λειτουργίας

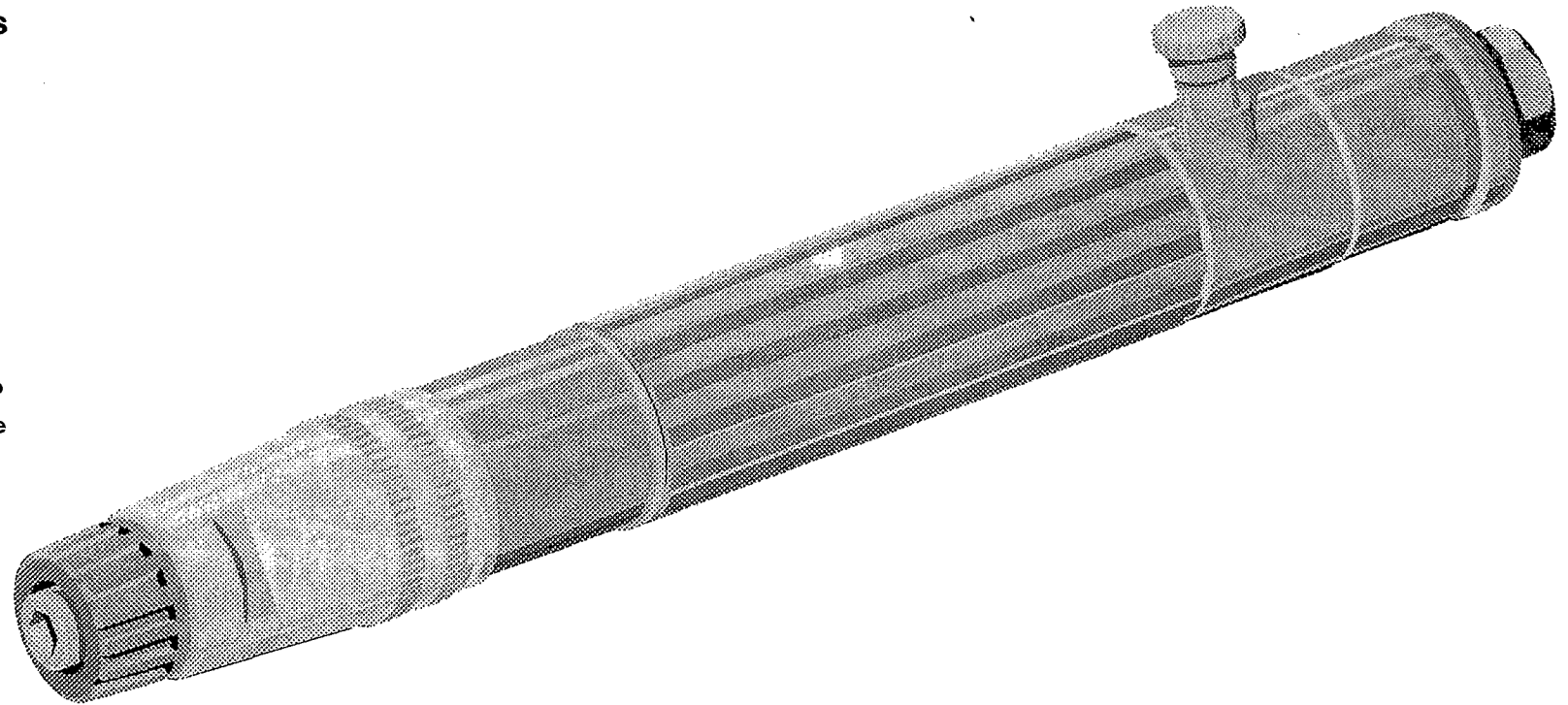
(NL) Onderhoudsinstructies
Onderdelenlijst
Bedieningsinstructies

(DK) Servicevejledning
Liste over dele
Betjeningsvejledning

(N) Serviceinstruksjoner
Deleliste
Driftsinstruksjoner

(S) Serviceinstruktioner
Reservdelslista
Bruksanvisning

(FIN) Huolto-ohjeet
Osaluettelo
Käyttöohjeet



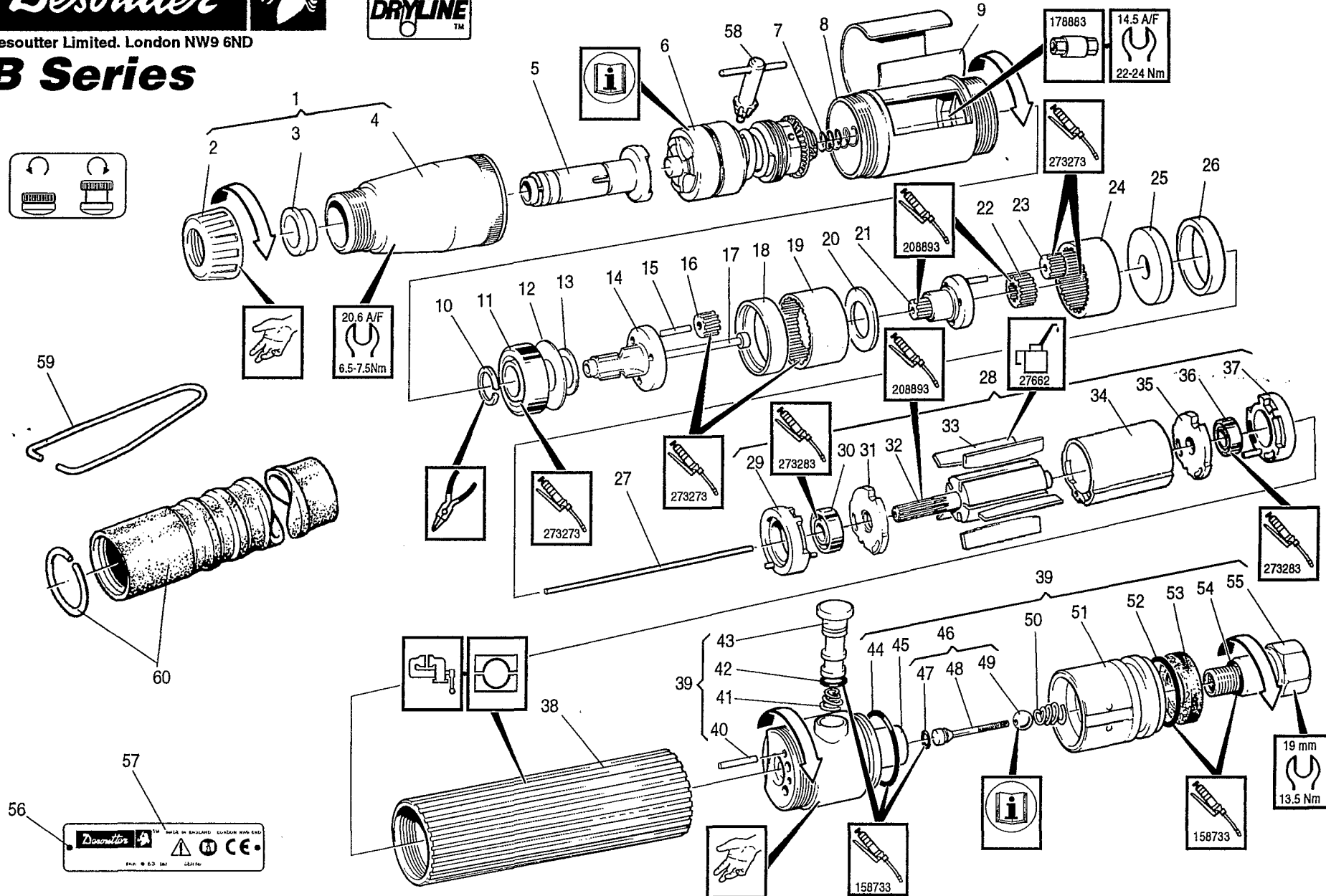
	1/4in.HEX.	1/4in.DE	5/16in.HEX.	5mm.DE
2B89-AX-1200	1457864-E	1458284-E	1458314-E	1458344-E
2B89-AX-800	1457874-E	1458294-E	1458324-E	1458354-E
2B89-AX-1700	1458214-E	1458304-E	1458334-E	1458364-E

Desoutter



Desoutter Limited. London NW9 6ND

B Series





Desoutter Limited.London NW9 6ND

Item Ps. Nr. No. Article	Part No Teil Nr. Référence	Description Beschreibung Description	Qty Menge Qté
	24	Ring Gear	1
	25	Washer	1
	26	Spacer	1
	27	Pushrod	1
	28	Motor Complete	1
	29	Front Housing	1
	30	Bearing	1
	31	Plate-Front	1
	32	Rotor	1
	33	Blade	5
	34	Cylinder	1
	35	Plate-Rear	1
	36	Bearing	1
	37	Rear Housing	1
	38	Motor Case	1
	39	Control Top Complete 1/8 in.BSP	1
	40	Valve Retaining Pin	1
	41	Spring	1
	*42	'O' Ring	1
	43	Reverse Valve -with Item 41	1
	*44	'O' Ring	1
	45	Control Top	1
	46	Valve Stem Complete	1
	*47	'O' Ring	1
	48	Valve Stem	1
	49	Ball	1
	50	Spring	1
	51	Silencer Housing	1
	*52	'O' Ring	1
	53	Silencer	1
	*54	'O' Ring	1
	55	Adaptor- 1/8 in.BSP	1
	55	Adaptor- 1/8 in.NPT	1
	56	Drive Screw	2
	57	Name Plate	1

(continued on page 4.....

- (GB) * Indicates normal replacement items. It is recommended that adequate stocks are held for servicing requirements. Always quote tool model number, serial number and spare part number when ordering spares.
- (D) * Bedeutet normale Verschleißteile. Es empfiehlt sich eine angemessene Menge für Wartungszwecke auf Lager zu halten. Bei der Bestellung von Ersatzteilen, bitte immer angeben: Typennummer der Bohrmaschine, Werknummer und Ersatzteilnummer.
- (F) * Le symbole astérisque (*) indique des articles de rechange normaux. Il est recommandé d'en conserver des stocks suffisants pour assurer toutes les opérations d'entretien courant. Lors de la commande de pièces de rechange, toujours citer le numéro de modèle de l'outilage, son numéro de série et le numéro de référence de chaque pièce de rechange.
- (E) * Indica elementos de reposición regular. Se recomienda tener una cantidad adecuada de los mismos en reserva a efectos de mantenimiento. Al encargar piezas de recambio, siempre debe indicarse el número de modelo de la herramienta, su número de serie y el número de la pieza de recambio.
- (P) * Indica itens que são substituídos regularmente. É recomendado que estoques adequados sejam mantidos para requisitos de manutenção. Cite sempre o número do modelo da ferramenta, número de série, e número da peça acessória quando pedindo acessórios.
- (I) * L'asterisco denota ricambi normali. Si consiglia di mantenere scorte adeguate alle esigenze della manutenzione. Nell'ordinazione di ricambi citare il numero di modello dell'utensile, il numero di matricola e quello di catalogo del pezzo.
- (GR) * Σημαίνει συνηθισμένα είδη (τεμάχια) για αντικατάσταση. Σας συνιστούμε να τηρείτε αρκετό απόθεμα από τα είδη που χρειάζονται αντικατάσταση. Όταν παραγγέλνετε ανταλλακτικά πάντα να γράφετε τον αριθμό μοντέλου του εργαλείου, τον αριθμό σειράς και τον αριθμό ανταλλακτικού.
- (NL) * Betekent normale reserveartikelen. Het verdient aanbeveling om voldoende voor onderhoudsbehoeften voorradig te hebben. Bij bestelling van reserveonderdelen geef altijd modelnummer, volgnummer en reserveonderdeelnnummer van het werktuig op.
- (DK) * Indikerer normale udskiftningsemner. Det anbefales at have rigelige forsyninger af dele til brug i forbindelse med eftersyn. Opgiv altid det korrekte værktøjsmodelnummer, serienummer og reservedelsnummer ved bestilling af reservedele.
- (N) * Angir normale reservedeler. Det anbefales at tilstrekkelig antall reservedeler holdes på lager. Ved bestilling av deler må man alltid oppgi verktøyetts modellnr., serienr. og reservedelens nr.
- (S) * Utmärker normala reservdelar. Vi rekommenderar att tillräckligt antal lagras för serviceändamål. Uppge alltid verktygets modellnummer, serienummer samt reservedelens nummer vid beställning av reservdelar.
- (FIN) * Viittaa tavallisiin varaosiin. Suosittelemme, että riittäviä määriä pidetään varastossa huoltotarpeita varten. Työkalun mallinumero, sarjanumero ja varaosan numero on aina mainittava tilattaessa.



Desoutter Limited.London NW9 6ND

Item Ps. Nr. No. Article	Part No Teil Nr. Référence	Description Beschreibung Description	Qty Menge Qté
--------------------------------	----------------------------------	--	---------------------

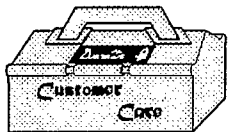
Supplied Accessories

58	29932	Clutch Adjusting Key	1
59	39433	Suspension Bail	1
60	215513	Exhaust Hose	1
	179923	Clutch Spring (White) 1700 RPM;1200 RPM	1
	179123	Clutch Spring (Black) 800 RPM	1

Optional Accessories

-	74642	Split Bush for T54 Stand	1
-	65092	Pistol Grip Kit	1

Service Kits



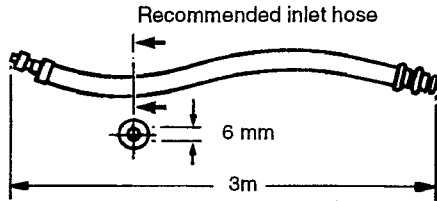
Gear Box Kit 1200 RPM (Contains Items 10,11,12,13,14,15,16,19,21,22,23,24)	Part No. 404123
Gear Box Kit 800 RPM (Contains Items 10,11,12,13,14,15,16,19,21,22,23,24)	Part No. 404133
Gear Box Kit 1700 RPM (Contains Items 10,11,12,13,14,15,16,19,21,22,23,24)	Part No. 405983
Motor Kit (Contains Items 30,33,36)	Part No. 394073
Motor Complete	Part No. 396433
Control Top Kit (Contains Items 40,41,42,44,46,50,52,53)	Part No. 404143
Control Top Complete	Part No. 403853

- (GB)** * Indicates normal replacement items. It is recommended that adequate stocks are held for servicing requirements. Always quote tool model number, serial number and spare part number when ordering spares.
- (D)** * Bedeutet normale Verschleißteile. Es empfiehlt sich eine angemessene Menge für Wartungszwecke auf Lager zu halten. Bei der Bestellung von Ersatzteilen, bitte immer angeben: Typennummer der Bohrmaschine, Werknummer und Ersatzteilnummer.
- (F)** * Le symbole astérisque (*) indique des articles de rechange normaux. Il est recommandé d'en conserver des stocks suffisants pour assurer toutes les opérations d'entretien courant. Lors de la commande de pièces de rechange, toujours citer le numéro de modèle de l'outillage, son numéro de série et le numéro de référence de chaque pièce de rechange.
- (E)** * Indica elementos de reposición regular. Se recomienda tener una cantidad adecuada de los mismos en reserva a efectos de mantenimiento. Al encargar piezas de recambio, siempre debe indicarse el número de modelo de la herramienta, su número de serie y el número de la pieza de recambio.
- (P)** * Indica itens que são substituídos regularmente. É recomendado que estoques adequados sejam mantidos para requisitos de manutenção. Cite sempre o número do modelo da ferramenta, número de série, e número da peça acessória quando pedindo acessórios.
- (I)** * L'asterisco denota ricambi normali. Si consiglia di mantenere scorte adeguate alle esigenze della manutenzione. Nell'ordinazione di ricambi citare il numero di modello dell'utensile, il numero di matricola e quello di catalogo del pezzo.
- (GR)** * Σημαίνει συνηθισμένα είδη (τεμάχια) για αντικατάσταση. Σας συνιστούμε να τηρείτε αρκετό απόθεμα από τα είδη που χρειάζονται αντικατάσταση. Όταν παραγγέλνετε ανταλλακτικά πάντα να γράφετε τον αριθμό μοντέλου του εργαλείου, τον αριθμό σειράς και τον αριθμό ανταλλακτικού.
- (NL)** * Betekent normale reserveartikelen. Het verdient aanbeveling om voldoende voor onderhoudsbehoeften voorradig te hebben. Bij bestelling van reserveonderdelen geeft altijd modelnummer, volgnummer en reserveonderdeelnnummer van het werktuig op.
- (DK)** * Indikerer normale udskiftningsemner. Det anbefales at have rigelige forsyninger af dele til brug i forbindelse med eftersyn. Opgiv altid det korrekte værktøjsmodelnummer, serienummer og reservedelsnummer ved bestilling af reservedele.
- (N)** * Angir normale reservedeler. Det anbefales at tilstrekkelig antall reservedeler holdes på lager. Ved bestilling av deler må man alltid oppgi verktøyetts modellnr., serienr. og reservedelens nr.
- (S)** * Utmärker normala reservdelar. Vi rekommenderar att tillräckligt antal lagras för serviceändamål. Uppge alltid verktygets modellnummer, serienummer samt reservedelens nummer vid beställning av reservdelar.
- (FIN)** * Viittaa tavallisiin varaosiin. Suosittelemme, että riittäviä määriä pidetään varastossa huoltotarpeita varten. Työkalun mallinnumero, sarjanumero ja varaosan numero on aina mainittava tilattaessa.

STATEMENT OF USE

Product is designed for installing and removing threaded fasteners in wood, metal and plastic.

GENERAL



Lubrication

This is a DRYLINE tool designed to operate on a totally dry air line i.e. one without any oil or water moisture. DRYLINE tools can also operate on a lubricated or partly lubricated air line thus allowing easy interchangeability with existing installations. If lubrication is required an air line lubricator should be fitted down stream of the filter. Use ISO VG 15.
 158733 = Molycote PG75 273283 = BP FG00EP
 208893 = Rocol 0864G 27662 = ISOVG15
 273273 = BP Q5618

DATA

Maximum air pressure P_{max} = 6.3 bar
 Minimum air pressure P_{min} = 4.0 bar
 Sound Pressure Level (dBA) = 73±2 re.CAGI-PNEUROP Test code

Vibration Level (m/sec²) re ISO 8662

- 2B89-AX-1200 = < 2.5
- 2B89-AX-800 = < 2.5
- 2B89-AX-1700 = < 2.5

Weight = 0.68 kg.

Accessories

A wide range of accessories are available and a suitable item should be selected from the relevant Desoutter Catalogue.

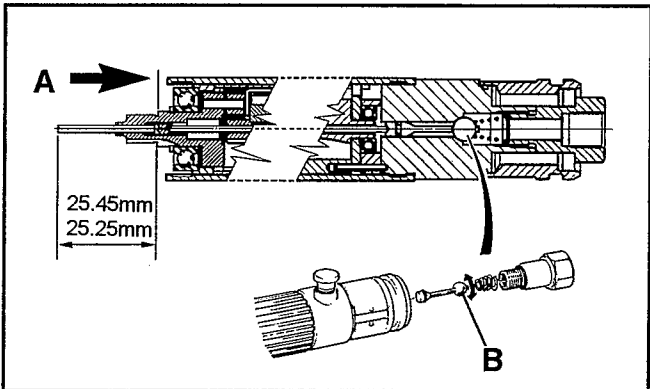
	WARNING
	BEFORE OPERATING THIS TOOL, READ AND UNDERSTAND PNEUMATIC SCREWDRIVER SAFETY INSTRUCTIONS PART NO. 37027.3

WARNING
NEVER CONNECT A PART ASSEMBLED TOOL TO THE AIR SUPPLY

OPERATING

With the correct accessory fitted connect the tool to the air supply. Grip the tool around the motor case and press the tool into the fixing that is to be tightened; the motor will start and tighten the fixing to the required torque set by adjusting the tensions on the clutch spring. At this point the internal drive is disengaged and the air to the motor cut off.

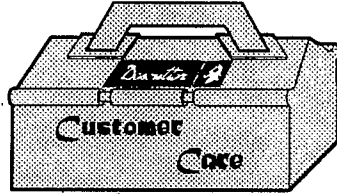
SETTING THE PUSH-ROD



Apply pressure in direction of arrow (A).
 Obtain the specified dimensions by adjusting the position of the ball on the push rod and ball assembly (B) which has 0.35mm pitch.

MAINTENANCE INSTRUCTIONS

1. Service should be carried out at intervals of 1000 hours' use.
2. All torque figures ± 10%.
3. Replace as necessary all 'O' rings, bearings and rotor blades. See service kits.



4. When disposing of components, lubricants, etc ... ensure that the relevant safety procedures are carried out.
5. Indicates direction of dismantling.
6. Torque values stated are for assembly.

WARNING
THE ROTOR BLADES IN THIS TOOL HAVE A PTFE CONTENT. THE NORMAL HEALTH AND SAFETY RECOMMENDATIONS CONCERNING PTFE MUST BE OBSERVED WHEN HANDLING THESE ROTOR BLADES.
(1) DO NOT SMOKE. (2) MOTOR COMPONENTS MUST BE WASHED WITH CLEANING FLUID AND NOT BLOWN CLEAR WITH AN AIR LINE. (3) THE SILENCER MUST BE REPLACED WHEN DIRTY, DO NOT CLEAN AND RE-USE. (4) WASH HANDS BEFORE COMMENCING ANY OTHER ACTIVITY.

©Copyright 1996, Desoutter, London NW9 6ND, UK.
 All rights reserved. Any unauthorized use or copying of the contents or part thereof is prohibited. This applies in particular to trademarks, model denominations, part numbers and drawings.
 Use only authorized parts. Any damage or malfunction caused by the use of unauthorized parts is not covered by Warranty or Product Liability.

