

Desoutter



TM



Desoutter Limited. London NW9 6ND

2D189-LX

(GB) Servicing Instructions
Parts List
Operating Instructions

(D) Wartungsanleitung
Teileliste
Bedienungsanleitung

(F) Manuel d'entretien
Liste de pièces
Manuel d'utilisation

(E) Instrucciones de Servicio
Listas de Repuestos
Instrucciones de Operación

(P) Instruções de Manutenção
Listas de Peças
Instruções de Funcionamento

(I) Istruzioni per la Manutenzione
Elenco delle Parti
Istruzioni Operative

(GR) Οδηγίες Συντήρησης
Κατάλογοι Ανταλλακτικών
Οδηγίες Λειτουργίας

(NL) Onderhoudsinstructies
Onderdelenlijst
Bedieningsinstructies

(DK) Servicevejledning
Liste over dele
Betjeningsvejledning

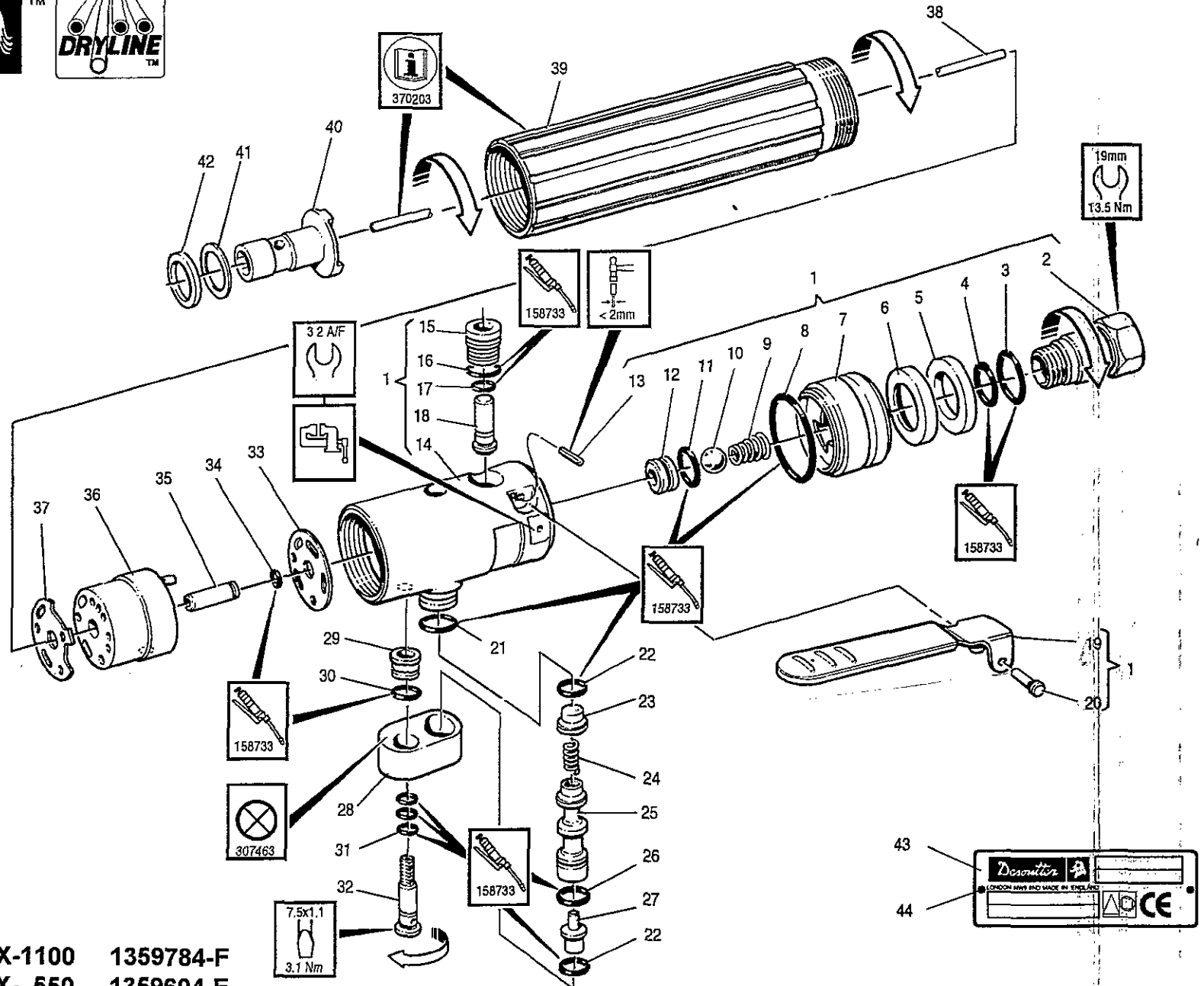
(N) Serviceinstruksjoner
Delelister
Driftsinstruksjoner

(S) Serviceinstruktioner
Reservdelslista
Bruksanvisning

(FIN) Huolto-ohjeet
Osaluettelo
Käyttöohjeet

2D189-LX-1100
2D189-LX- 550

1359784-F
1359604-F



2D189-LX Parts List / Teilleiste / Liste de Pièces

Item Ps. Nr. No. Article	Part No Teil Nr. Référence	Qty Menge Qté	Item Ps. Nr. No. Article	Part No Teil Nr. Référence	Qty Menge Qté
1	320463 (G $\frac{1}{4}$) 320473 ($\frac{1}{4}$ NPT)	1	36	320423	1
			*37	320343	1
			38	292013	1
			39	320333	1
2	261503 (G $\frac{1}{4}$) 261513 ($\frac{1}{4}$ NPT)	1	40	296633	1
			41	169053	1
				(2.00mm)	
				169063	
*3	268513	1		(2.40mm)	
*4	202313	1		169073	
5	252453	1		(2.80mm)	
6	252483	1		169083	
7	252423	1		(3.20mm)	
*8	203423	1		169093	
9	388673	1		(3.50mm)	
10	1693	1	42	323423	
*11	500953	1		(0.08mm)	
12	252383	1		323433	
13	261223	1		(0.13mm)	
14	320503	1		323443	
15	252533	1		(0.25mm)	
*16	203713	1	43	363363	1
*17	261213	1	44	54853	2
18	387943	1			
19	361673	1			
20	153863	1			
*21	43573	1			
*22	216463	2			
23	367313	1			
24	461623	1			
25	320313	1			
*26	250913	1			
27	320293	1			
28	320393	1			
29	320283	1			
*30	314203	1			
*31	281663	3			
32	320303	1			
*33	320353	1			
*34	320413	1			
35	320433	1			

- (GB) * Indicates normal replacement items. It is recommended that adequate stocks are held for servicing requirements. Always quote tool model number, serial number and spare part number when ordering spares.
- (D) * Bedeutet normale Verschleißteile. Es empfiehlt sich eine angemessene Menge für Wartungszwecke auf Lager zu halten. Bei der Bestellung von Ersatzteilen, bitte immer angeben: Typennummer der Bohrmaschine, Werknummer und Ersatzteilnummer.
- (F) * Le symbole astérisque (*) indique des articles de rechange normaux. Il est recommandé d'en conserver des stocks suffisants pour assurer toutes les opérations d'entretien courant. Lors de la commande de pièces de rechange, toujours citer le numéro de modèle de l'outillage, son numéro de série et le numéro de référence de chaque pièce de rechange.
- (E) * Indica elementos de reposición regular. Se recomienda tener una cantidad adecuada de los mismos en reserva a efectos de mantenimiento. Al encargar piezas de recambio, siempre debe indicarse el número de modelo de la herramienta, su número de serie y el número de la pieza de recambio.
- (P) * Indica itens que são substituídos regularmente. É recomendado que estoques adequados sejam mantidos para requisitos de manutenção. Cite sempre o número do modelo da ferramenta, número de série, e número da peça acessória quando pedindo acessórios.
- (I) * L'asterisco denota ricambi normali. Si consiglia di mantenere scorte adeguate alle esigenze della manutenzione. Nell'ordinazione di ricambi citare il numero di modello dell'utensile, il numero di matricola e quello di catalogo del pezzo.
- (GR) * Σημαίνει συνηθισμένα είδη (τεμάχια) για αντικατάσταση. Σας συνιστούμε να τηρείτε αρκετό απόθεμα από τα είδη που χρειάζονται αντικατάσταση. Όταν παραγγέλλετε ανταλλακτικά πάντα να γράφετε τον αριθμό μοντέλου του εργαλείου, τον αριθμό σειράς και τον αριθμό ανταλλακτικού.
- (NL) * Betekent normale reserveartikelen. Het verdient aanbeveling om voldoende voor onderhoudsbehoeften voorradig te hebben. Bij bestelling van reserveonderdelen geef altijd modelnummer, volgnummer en reserveonderdeelnnummer van het werktuig op.
- (DK) * Indikerer normale udskiftningsemner. Det anbefales at have rigelige forsyninger af dele til brug i forbindelse med eftersyn. Opgiv altid det korrekte værktøjsmodelnummer, serienummer og reservedelsnummer ved bestilling af reservedele.
- (N) * Angir normale reservedeler. Det anbefales at tilstrekkelig antall reservedeler holdes på lager. Ved bestilling av deler må man alltid oppgi verktøyets modellnr., serienr. og reservedelens nr.
- (S) * Utmärker normala reservdelar. Vi rekommenderar att tillräckligt antal lagras för serviceändamål. Uppge alltid verktygets modellnummer, serienummer samt reservedelens nummer vid beställning av reservdelar.
- (FIN) * Viittaa tavallisiin varaosiin. Suosittelemme, että riittävä määrä pidetään varastossa huoltotarpeita varten. Työkalun mallinnumero, sarjanumero ja varaosan numero on aina mainittava tilattaessa.



Desoutter Limited

STATEMENT OF USE

Product is designed for installing threaded fasteners in metal and plastic.
As purchased this tool is fitted with a Nose Attachment Kit to suit the thread in the captive fastener. Details of these kits will be found below.

OPERATING

With the captive fastener located in position the operator should engage the drive screw mandrel part of the nose attachment kit with the fastener. Press and hold on the control lever.
This tool will run down onto the fastener and lock it in position; at this point the pre-set clutch will action automatically selecting reverse rotation to power the tool out of the fastener.
The control lever should only be released when the tool has completed the work cycle.
NOTE: Should a fault be encountered during a fixing operation the manual reverse button should be pressed to disengage the tool.

CLUTCH ADJUSTMENT

The basic adjustment is for the 2D89 tool. Trial operations must be carried out to obtain the ideal fixing for the fastener; too weak a clutch setting and the fastener will be loosely retained, too strong a setting and the thread in the fastener could be damaged.

SERVICING INSTRUCTIONS

The information found in the 2D89 Service Sheet should be used when servicing this tool. Mechanical variations are shown in the illustrations, and setting details are given below:
Spacer and shims (41;42) are used to set an axial movement of the clutch to be not more than 0.13mm with no pre-load.
NOTE: Shims (41) must be adjacent to the bit holder (40)

The push rod setting is 28.7 to 29.0mm (see 2D89 Service Sheet). BUT the required setting is obtained by grinding the push rod length to suit.

NOTE: Make sure that valve (35) is pushed fully to the rear of the tool before checking the push rod setting.

LUBRICATION

158733 = Molycote PG75 307463 = Loctite Superflex Clear.
208893 = Rocol M204G 273273 = BP Q5618
273283 = BP FG00EP 27662 = ISO VG 15

DATA

Maximum air pressure Pmax = 6.3 bar
Minimum air pressure Pmin = 2.0 bar
Sound Pressure Level (dBA) = 73 ± 2 re CAGI-PNEUROP test code
Vibration Level (m/sec²) = < 2.5 re ISO 8662
Weight = 1.3 kg.

©Copyright 1995, Desoutter, London NW9 6ND, UK.

All rights reserved. Any unauthorized use or copying of the contents or part thereof is prohibited. This applies in particular to trademarks, model denominations, part numbers and drawings.
Use only authorized parts. Any damage or malfunction caused by the use of unauthorized parts is not covered by Warranty or Product Liability.

Thread Size		Nose Part No.	Thrust Washer Part No.	Thrust Bearing Part No.	Bearing sleeve/washer Part No.	Drive Screw mandrel Part No.	Drive Key A/F size Part No.		Spring Part No.	Assembly 1-7 Part No.
M3 x 0.5		273513	273603	273613	273423	35mm 279683	2.5mm	72362	16313	76552
M4 x 0.7		273533	273603	273613	273443	35mm 273643	3mm	72172	16313	76562
M5 x 0.8		273563	273603	273613	273473	35mm 273653	4mm	72192	16313	76572
M6 x 1.0		273573	273603	273613	273483	35mm 273893	5mm	72222	16313	76582
M8 x 1.25		273593	273603	273613	279023	40mm 236503	6mm	72242	16313	76592
5x 32 UNC		273523	273603	273613	273433	1 1/4" 273663	3/32"	72162	16313	76602
5x 32 UNF		273543	273603	273613	273453	1 1/2" 101523	1/8"	72182	16313	76622
10x 24 UNC		273553	273603	273613	273463	1 1/2" 273673	5/32"	72192	16313	76632
10x 32 UNF		273553	273603	273613	273463	1 1/2" 273683	5/32"	72192	16313	76642
1/4" UNC		273583	273603	273613	273493	1 1/2" 273693	3/16"	72202	16313	76652
1/4" UNF		273583	273603	273613	273493	1 1/2" 78283	3/16"	72202	16313	76662
3/16" BSF		273553	273603	273613	273463	1 1/4" 273713	5/32"	72192	16313	76692
1/4" BSF		273583	273603	273613	273493	1 1/2" 273723	3/16"	72202	16313	76702
1/8" Whit.		273513	273603	273613	273423	1 1/4" 273743	3/32"	72162	16313	76732
3/16" Whit.		273553	273603	273613	273463	1 1/4" 273753	5/32"	72192	16313	76742
1/4" Whit.		273583	273603	271613	273493	1 1/2" 15783	3/32"	72202	16313	76752
4BA		273523	273603	273613	273433	1 1/4" 273663	3/32"	72162	16313	76602
2BA		273553	273603	273613	273463	1 1/2" 101523	5/32"	72182	16313	76622
8BA		273573	273603	273613	273483	1 1/2" 101523	3/16"	72202	16313	76792

WARNING

BEFORE OPERATING THIS TOOL, READ AND UNDERSTAND PNEUMATIC SCREWDRIVER SAFETY INSTRUCTIONS PART NO. 37027.3