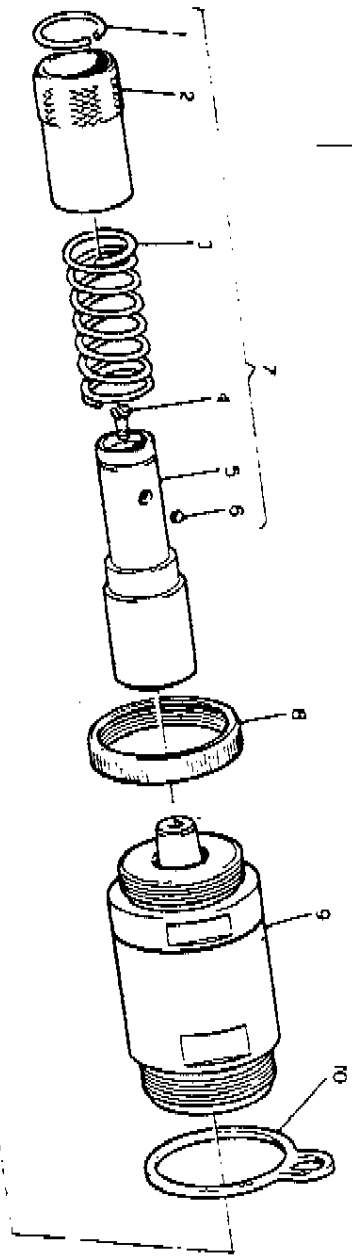


Desoutter

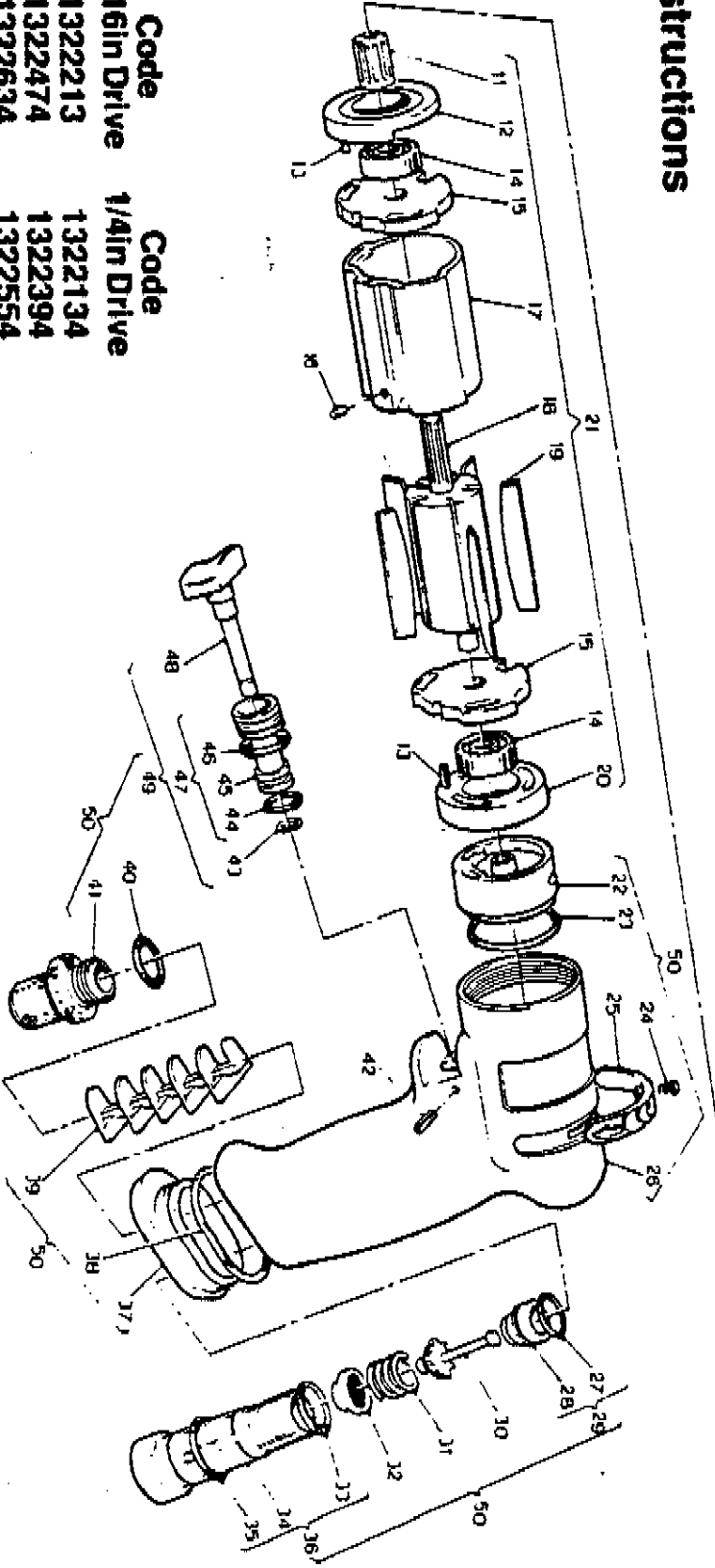
D Series

Pistol Grip Screwdrivers
and Nutrunners

PostNet Fax Note	7871	Date	24	02	# of pages	4
To	Low Z	From				
Co/Dept		Co				
Phone #		Phone #				
Fax #	401-679-0165	Fax #				



Operating Instructions
Servicing Instructions
Parts List



Types	Code	5/16in Drive	1/4in Drive
2D8-P3-2200	1322213	1322213	1322134
2D8-P3-1400	1322474	1322474	1322394
2D8-P3-850	1322634	1322634	1322554
2D8-P3-600	1322894	1322894	1322714

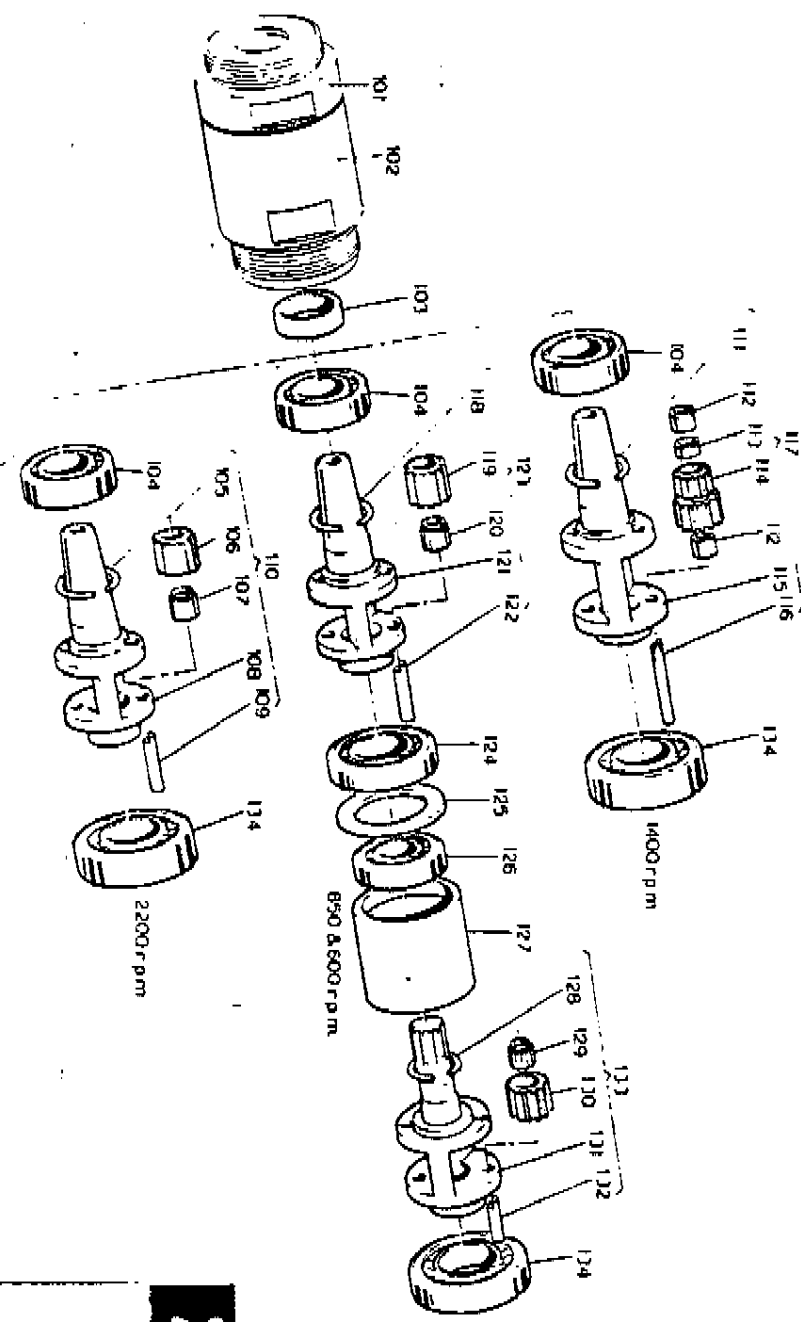
Gear Boxes and Parts List

Item No.	Part No.	Description	Qty.
101	191773	Gear & Nose — 2100rpm	1
—	274090	Gear & Nose — 1800rpm	1
—	274100	Gear & Nose — 850 & 600rpm	1
102	291780	Clamp Sleeve — 2200rpm	1
—	291863	Clamp Sleeve — 1400rpm	1
—	291864	Clamp Sleeve — 850 & 600rpm	1
103	157513	Collar	1
*104	179543	Bearing	1
*105	29563	Circip	1
106	154013	Planet Wheel	1
*107	502093	Needle Bearing	2
108	44453	Planet Cage	2
*109	1463	Planet Pin	2
110	289380	Planet Cage Complete — 2100rpm	1
*111	63323	Circip	1
*112	902893	Needle Bearing	4
113	218040	Spacer	2

Item No.	Part No.	Description	Qty.
114	238712	Planet Wheel	2
115	94963	Planet Cage	1
*116	41690	Planet Pin	2
117	94972	Planet Cage Complete — 1400rpm	1
*118	25571	Circip — 850rpm	1
—	17422	Circip — 800rpm	1
119	65384	Planet Wheel — 850rpm	2
—	16703	Planet Wheel — 600rpm	2
*120	502093	Needle Bearing	2
121	44472	Planet Cage — 850rpm	1
—	70713	Planet Cage — 600rpm	1
*122	1453	Planet Pin	2
—	44483	Planet Cage Complete — 850rpm	1
—	70703	Planet Cage Complete — 600rpm	1
*124	2413	Bearing	1
125	37623	Washer	1
*126	2423	Bearing	1

Item No.	Part No.	Description	Qty.
127	36713	Gear Ring	1
*128	25563	Circip — 850rpm	1
—	25573	Circip — 600rpm	1
*129	502093	Needle Bearing	2
130	65383	Planet Wheel — 850 & 600rpm	2
131	83123	Planet Cage — 850rpm	1
—	81473	Planet Cage — 600rpm	1
*132	1463	Planet Pin	2
—	78052	Planet Cage Complete — 850rpm	1
133	81480	Planet Cage Complete — 600rpm	1
*134	2413	Bearing	1

* Indicates normal replacement items. It is recommended that adequate stocks are held for servicing requirements. Always quote model number, serial number and spare part numbers when ordering spares.



Desoutter Incorporated
 11845 Brookfield Ave.
 Livonia, Michigan 48150
 Telephone (313) 522-7010 Telex 1101

REQUIREMENTS

Air Supply
A water free and filtered air supply is required, at a pressure of 6 bar (87 lb/in²), with a flow of 8.5 ft³ (18 cu ft/min); controlled by a pressure regulator selected from the Desoutter Air Line Service Equipment Catalogue.

Lubrication

Correct lubrication is vital for the maximum performance of the tool and an airline lubricator should be fitted into the system down stream of the filter.

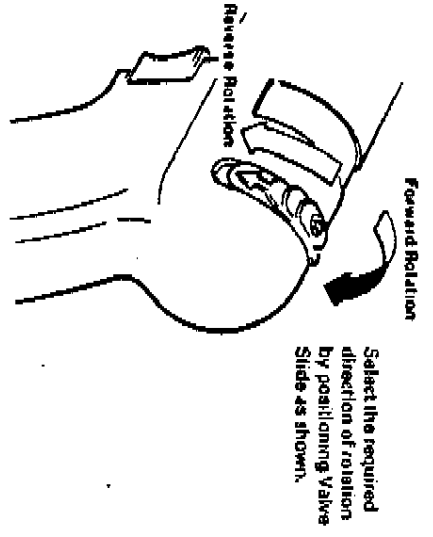
Desoutter recommends the use of an ISO Viscosity Classified Oil, grade number ISO VG 15, in the lubricator.

Accessories

A wide range of screwdriving bits and nutrunning sockets are available and a suitable item should be selected from the Desoutter Accessories Catalogue.

The retention of these items is by taper locked ball (quick release type) where an outer sleeve is retracted to release.

OPERATING



Select the required direction of rotation by positioning Valve Slide as shown.

With the correct accessory fitted into the tool connect the air supply. Hold the tool around the pistol grip and operate the button control. The motor will run and tighten a fixing to the required torque. see Initial Setting.

WARNING

- 1) Always disconnect tool from the power supply before attempting any replacement, adjustment, servicing or dismantling.
- 2) Ensure that no loose articles of clothing or cleaning material can be caught by the rotating parts of the tool.
- 3) Always allow the tool to stop before removing work or resting tool

- 4) Ensure that work piece is securely clamped before commencement of operation — clear all loose items from vicinity.

INITIAL SETTING

When received the torque output of the tool will require setting to match the job requirement.

It is recommended that a trial tightening operation is carried out to determine the amount of adjustment required. The ideal instrument for checking the torque is an electronic peak meter (request information from Desoutter); linking this a dial indicating torque wrench is adequate.

Torque adjustment carried out by reducing the air pressure from the recommended maximum of 6 bar (87 lb/in²). As an alternative, air flow limiter can be obtained from Desoutter under part number 81223 for 1/2 in. BSP and 83873 for 1/4 in. NPT.

SERVICE REQUIREMENTS

General Notes

Use the following lubricants:

- Oil — ISO Viscosity Classified — ISO VG15, for motors.
- Grease — BP FCOO-EP, for motor bearings.
- Grease — Duckhams Type Q5618, for gears and other bearings.
- Silicone Grease — Molykote JD, for O-rings.

The following tools will be required:

- Spanner — 24mm
- Spanner — 32mm
- Spanner — 19mm
- Spanner — 16mm
- Screwdriver — No 1 Positive
- Screwdriver — Fine Blade
- Wedge — 75304

The following torque values MUST be used:

- Item 4 to Item 7, 8 Nm (6 lb ft)
- Item 8 to Item 9 Hand tighten
- Item 36 to Item 26, 13.5 Nm (10 lb ft)
- Item 101 to Item 102 24 Nm (25 lb ft)
- Item 102 to Item 26, 24 Nm (25 lb ft)

Replace as necessary all O-rings, gaskets, bearings and rotor blades.

Bearings that have a retainer holding the balls in place must be assembled into the tool with the blank face of the retainer to the air flow, in the case of the motor the blank faces must face each other across the rotor.

The following components have left hand threads — Item 8 and the front thread of item 101. All other threads are right hand

TO DISMANTLE

Clamp the pistol grip body (25) in a soft jawed vice and remove screw (4) Using wedges release die holder complete (2).

Unscrew the gearbox (9) from the pistol grip and pull out the motor complete (2).

Remove screw (24) and lift off valve slide (25), withdraw valve (22) with its O-ring (23).

Remove the pistol grip body from the vice, unscrew air inlet bolt (26) remove the exhaust cap (27) the internal components can now be withdrawn out of the base of the pistol grip

To release valve assembly (49) drive out spring pin (42) and pull the valve stem/butter assembly (48).

The remainder of the dismantling follow normal engineering practice with reference to the illustration.

TO ASSEMBLE

Sub-Assemblies

Using the illustration see a guide assemble the pistol grip, and if dismantled the planet cages.

The following instructions for the motor complete (21) must be followed.

Take the rotor (18) and place the rear bearing plate (15), with groove to rotor, into position. Press bearing (14) onto the rotor so that there is a 0.03mm (0.0015 in) gap between the rotor and the rear bearing plate. Holding the rotor and rear bearing plate assembly with the gear end of the rotor uppermost, slide the cylinder (17) over the rotor

NOTE: The cylinder must be located with the motor alignment pin (16) biased to the rear bearing plate.