

Desoutter



Desoutter Limited, HP2 7DR, UK

2D89-LX

GB Servicing Instructions
Parts List
Operating Instructions

D Wartungsanleitung
Teilleiste
Bedienungsanleitung

F Manuel d'entretien
Liste de pièces
Manuel d'utilisation

E Instrucciones de Servicio
Listas de Repuestos
Instrucciones de Operación

P Instruções de Manutenção
Listas de Peças
Instruções de Funcionamento

I Istruzioni per la Manutenzione
Elenco delle Parti
Istruzioni Operative

GR Οδηγίες Συντήρησης
Κατάλογοι Ανταλλαχτικών
Οδηγίες Λειτουργίας

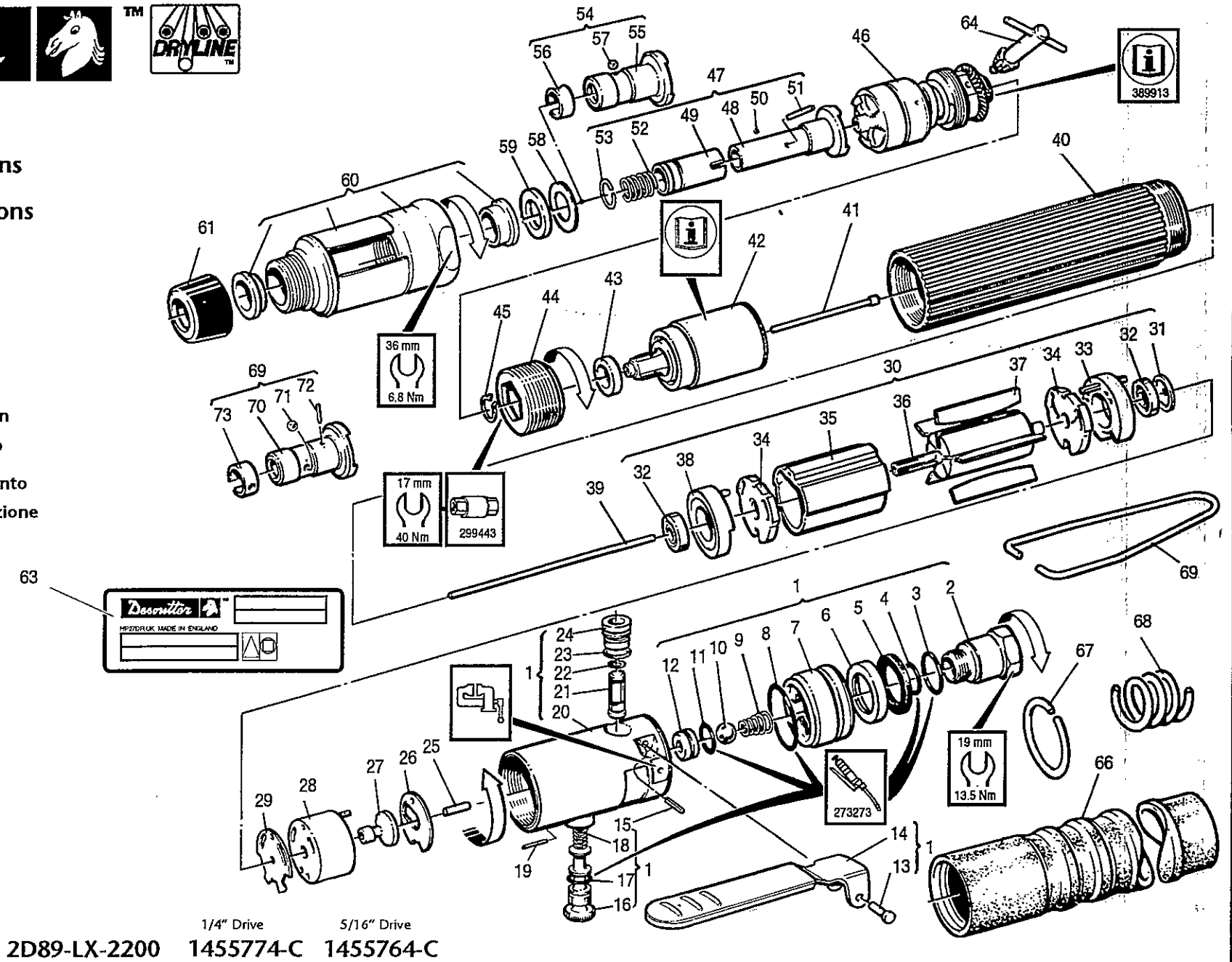
NL Onderhoudsinstructies
Onderdelenlijst
Bedieningsinstructies

DK Servicevejledning
Liste over dele
Betjeningsvejledning

N Serviceinstruksjoner
Deleliste
Driftsinstruksjoner

S Serviceinstruktioner
Reservdelista
Bruksanvisning

FIN Huolto-ohjeet
Osaluettelo
Käyttöohjeet



1/4" Drive 5/16" Drive
2D89-LX-2200 1455774-C 1455764-C

Item Ps. Nr. No. Article	Part No. Teil Nr. Référence	Qty Menge Qté	Item Ps. Nr. No. Article	Part No. Teil Nr. Référence	Qty Menge Qté
1	390873 (1/4" BSP)	1	38	304673	1
	390893 (1/4" NPT)	1	39	310403	1
2	261503 (1/4" BSP)	1	40	313243	1
	261513 (1/4" NPT)	1	41	301533	1
*3	268513	1	42	(see sheet 7)	1
*4	202313	1	43	306813	1
*5	252453	1	44	313103	1
6	252483	1	*45	42353	1
7	252423	1	46	389803	1
*8	203423	1	47	370683	1
9	388673	1	48	370653	1
10	1693	1	49	370673	1
*11	500953	1	50	280313	1
12	252383	1	*51	327153	1
13	235853	1	52	301013	1
14	361673	1	*53	200083	1
*15	261223	1	54	298043	1
16	252543	1	55	296643	1
*17	250913	1	56	86058	1
*18	252563	1	57	72408	1
19	259953	1	*58		
20	390853	1	*59		
21	387943	1	60	388683	1
*22	261213	1	61	74088	1
*23	203713	1	63	363363	1
24	252533	1	Supplied Accessories		
25	329483	1	64	29932	1
*26	287303	1	65	222453	1
27	323283	1	66	235203	1
28	287293	1	67	68448	1
29	253003	1	68	39433	1
30	313423	1	Optional Accessories		
31	270493	1	69296973	1	
*32	33433	2	70	296633	1
33	254883	1	71	66868	1
34	254873	2	*72	256763	1
35	254853	1	73	86058	1
36	306533	1			
*37	300623	5			

**Service Kits
Service-Ausrüstungen
Troussets d'Entretien**

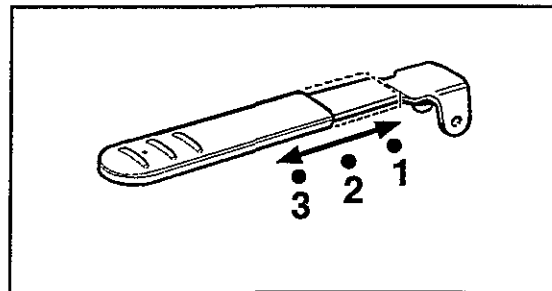
Part no. Teil Nr. Référence	Item Ps. Nr. No. Article	Qty Menge Qté
-----------------------------	--------------------------	---------------

369623	3	1
	4	1
	8	1
	11	1
	17	1
	22	1
	23	1
	26	1
29	1	

367083	23	2
	28	5

369633	58	
	(0.08mm)	3
	(0.13mm)	3
	(0.25mm)	3
	59	
	(2.0mm)	1
(2.4mm)	1	
(3.2mm)	1	

ADJUSTING THE LEVER



- GB** * Indicates normal replacement items. It is recommended that adequate stocks are held for servicing requirements. Always quote tool model number, serial number and spare part number when ordering spares.
- D** * Bedeutet normale Verschleißteile. Es empfiehlt sich eine angemessene Menge für Wartungszwecke auf Lager zu halten. Bei der Bestellung von Ersatzteilen, bitte immer angeben: Typennummer der Bohrmaschine, Werknummer und Ersatzteilnummer.
- F** * Le symbole astérisque (*) indique des articles de rechange normaux. Il est recommandé d'en conserver des stocks suffisants pour assurer toutes les opérations d'entretien courant. Lors de la commande de pièces de rechange, toujours citer le numéro de modèle de l'outillage, son numéro de série et le numéro de référence de chaque pièce de rechange.
- E** * Indica elementos de reposición regular. Se recomienda tener una cantidad adecuada de los mismos en reserva a efectos de mantenimiento. Al encargar piezas de recambio, siempre debe indicarse el número de modelo de la herramienta, su número de serie y el número de la pieza de recambio.
- P** * Indica itens que são substituídos regularmente. É recomendado que estoques adequados sejam mantidos para requisitos de manutenção. Cite sempre o número do modelo da ferramenta, número de série, e número da peça acessória quando pedindo acessórios.
- I** * L'asterisco denota ricambi normali. Si consiglia di mantenere scorte adeguate alle esigenze della manutenzione. Nell'ordinazione di ricambi citare il numero di modello dell'utensile, il numero di matricola e quello di catalogo del pezzo.
- GR** * Σημαίνει συνθησιμένα είδη (τεμάχια) για αντικατάσταση. Σας συνιστούμε να τηρείτε αρκετό απόθεμα από τα είδη που χρειάζονται αντικατάσταση. Όταν παραγγέλνετε ανταλλακτικά πάντα να γράφετε τον αριθμό μοντέλου του εργαλείου, τον αριθμό σειράς και τον αριθμό ανταλλακτικού.
- NL** * Betekent normale reserveartikelen. Het verdient aanbeveling om voldoende voor onderhoudsbehoefte voorradig te hebben. Bij bestelling van reserveonderdelen geef altijd modelnummer, volgnummer en reserveonderdeelnummer van het werktuig op.
- DK** * Indikerer normale udskiftningsemner. Det anbefales at have rigelige forsyninger af dele til brug i forbindelse med eftersyn. Opgiv altid det korrekte værktøjsmodelnummer, serienummer og reservedelsnummer ved bestilling af reservedele.
- N** * Angir normale reservedeler. Det anbefales at tilstrekkelig antall reservedeler holdes på lager. Ved bestilling av deler må man alltid oppgi verktøyetts modellnr., serienr. og reservedelens nr.
- S** * Utmärker normala reservdelar. Vi rekommenderar att tillräckligt antal lagras för serviceändamål. Uppge alltid verktygets modellnummer, serienummer samt reservdelens nummer vid beställning av reservdelar.
- FIN** * Viittaa tavallisiin varaosiin. Suosittelemme, että riittävä määrä pidetään varastossa huoltotarpeita varten. Työkalun mallinnumero, sarjanumero ja varaosan numero on aina mainittava tilattaessa.

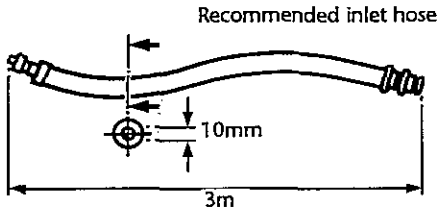


Desoutter Limited. HP2 7DR, UK

STATEMENT OF USE

Product is designed for installing and removing threaded fasteners in wood, metal and plastic.

GENERAL



LUBRICATION

This is a DRYLINE tool designed to operate on a totally dry air line i.e. one without any oil or water moisture. DRYLINE tools can also operate on a lubricated or partly lubricated air line thus allowing easy interchangeability with existing installations. If lubrication is required an air line lubricator should be fitted down stream of the filter. Use ISO VG 15.

- 158733 = Molycote PG75 273283 = BP FG00EP
- 208893 = Rocol M204G 27662 = ISO VG 15
- 273273 = BP Q5618

DATA

- Maximum air pressure Pmax = 6.3 bar
- Sound Pressure Level (dBA) = 73 ± 2 re. CAGI-PNEUROP Test code
- Vibration Level (m/sec²) = <2.5 re. ISO 8662
- Mass = 1.0kg (2D89-LX 2200)
- = 1.1kg (2D89-LX 1500, 1050, 540, 340)

	WARNING
BEFORE OPERATING THIS TOOL, READ AND UNDERSTAND PNEUMATIC SCREWDRIVER SAFETY INSTRUCTIONS PART NO. 37027.3	

ACCESSORIES

A wide range of screwdriving bits and nutrunning sockets are available and a suitable item should be selected from the Desoutter Accessories Catalogue.

OPERATING

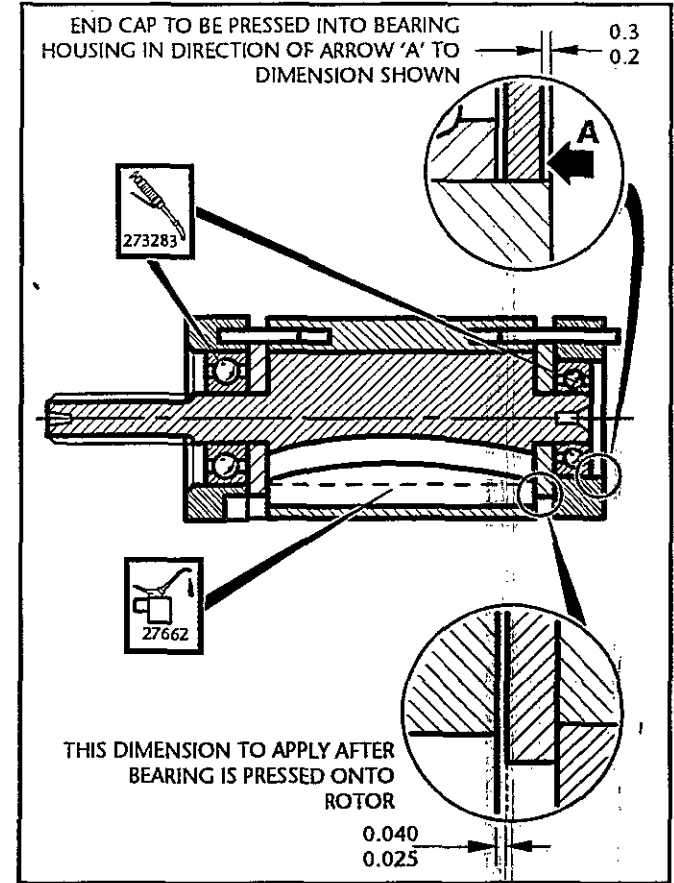
With the correct accessory fitted connect the tool to the air supply. Grip the tool around the motor case and press the tool into the fixing that is to be tightened; the motor will start and tighten the fixing to the required torque set by adjusting the tensions on the clutch spring. At this point the internal drive is disengaged and the air to the motor cut off.

To engage reverse rotation; press the reverse button and rotate it to lock in position.

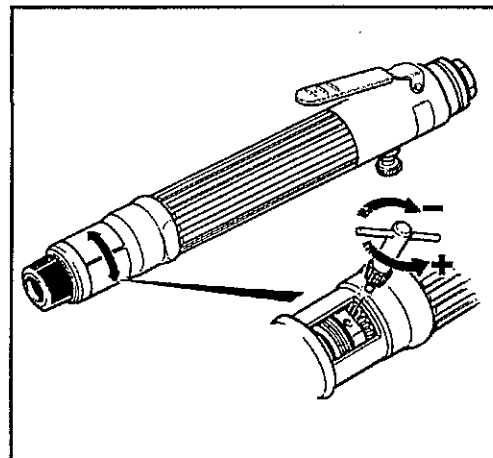
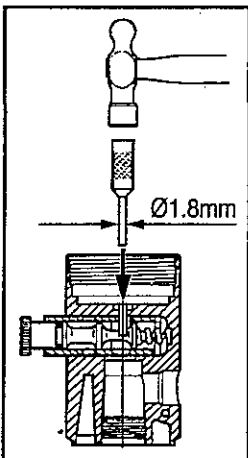
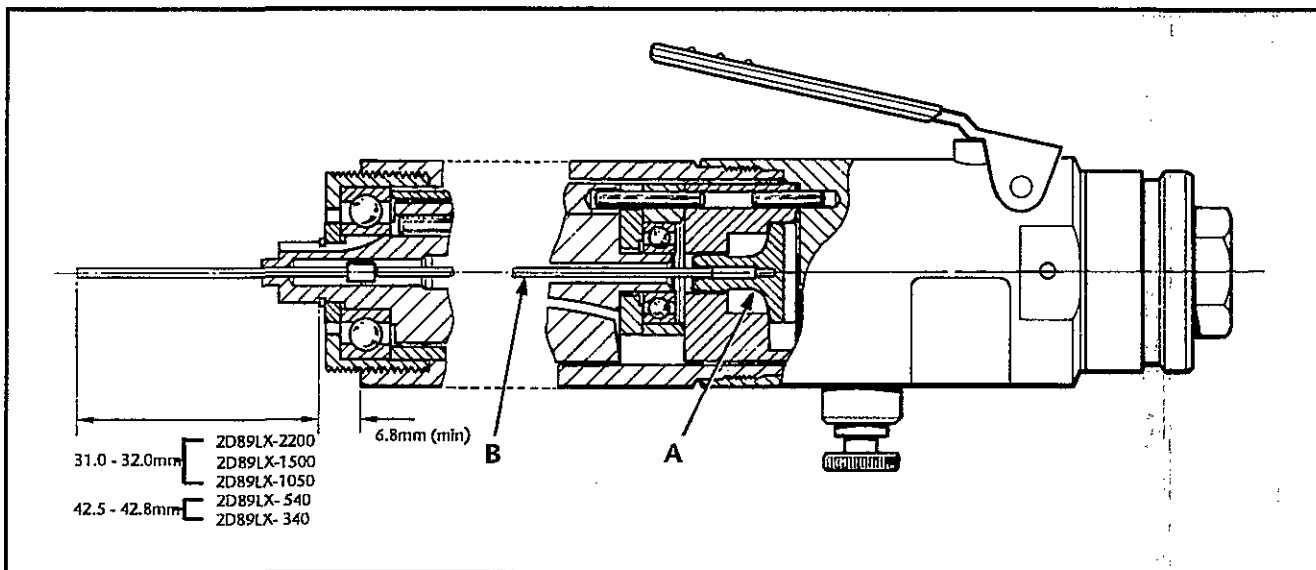
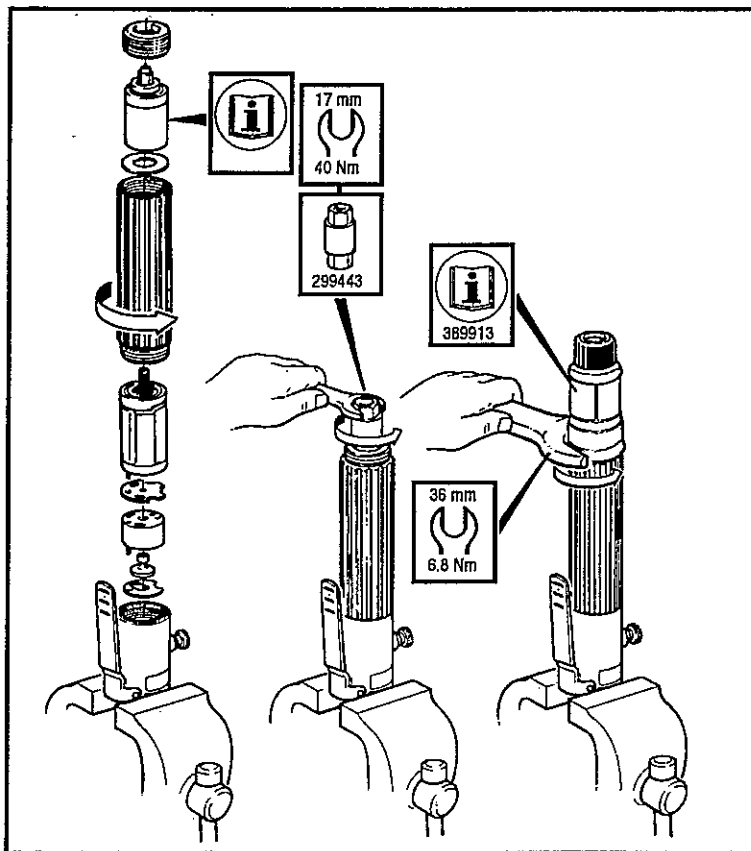
MAINTENANCE INSTRUCTIONS

1. Service should be carried out at intervals of 1000 hours' use.
2. All torque figures ± 10%.
3. Replace as necessary all 'O' rings, bearings and rotor blades. See service kits.
4. When disposing of components, lubricants, etc ... ensure that the relevant safety procedures are carried out.
5. Indicates direction of dismantling.
6. Torque values stated are for assembly.

	WARNING	
THE ROTOR BLADES IN THIS TOOL HAVE A PTFE CONTENT. THE NORMAL HEALTH AND SAFETY RECOMMENDATIONS CONCERNING PTFE MUST BE OBSERVED WHEN HANDLING THESE ROTOR BLADES.		
<ol style="list-style-type: none"> (1) DO NOT SMOKE. (2) MOTOR COMPONENTS MUST BE WASHED WITH CLEANING FLUID AND NOT BLOWN CLEAR WITH AN AIR LINE. (3) THE SILENCER MUST BE REPLACED WHEN DIRTY, DO NOT CLEAN AND RE-USE. (4) WASH HANDS BEFORE COMMENCING ANY OTHER ACTIVITY. 		



©Copyright 1998, Desoutter, HP2 7DR, UK.
 All rights reserved. Any unauthorized use or copying of the contents or part thereof is prohibited. This applies in particular to trademarks, model denominations, part numbers and drawings.
 Use only authorized parts. Any damage or malfunction caused by the use of unauthorized parts is not covered by Warranty or Product Liability.



(GB) Setting the push-rod
Connect the tool to the air line so that the valve seat (A) is seated, then measure the protrusion of the push rod.
Obtain the specified dimensions by grinding the push rod.(B)

(D) Schubstange einstellen
Werkzeug an Luftleitung anschließen, so daß Ventilsitz (A) eingeschliffen ist, dann hervorstehenden Teil der Schubstange messen.
Durch Schleifen der Schubstange Sollmaß erreichen.(B)

(F) Réglage du piston de poussée
Connecter l'outil à la prise d'air afin que le siège de la valve (A) soit en place, mesurer ensuite le porte-à-faux du piston.
Obtenir les dimensions requises en rectifiant le piston de poussée.(B)

(E) Ajustar la barra de presión
Conectar la herramienta a la línea de aire de tal manera que el asiento de la válvula (A) esté asentado, entonces medir la protuberancia de la barra de presión.
Obtener las dimensiones especificadas mecanizando la barra de presión con una amoladora.(B)

(P) Ajuste do tirante
Ligue a ferramenta à linha de ar de forma que a sede da válvula (A) fique assentada, então meça a protuberância do tirante.
Obtenha as dimensões especificadas esmerilando o tirante.

(I) Collegare l'attrezzo alla linea dell'aria di modo che la sede (A) della valvola è in sede e quindi misurare la sporgenza dell'asta di spinta.
Regolazione dell'asta di spinta (B)
Smerigliare l'asta fino a portarla alle dimensioni specificate. (B)

(GR) Τοποθέτηση της ωστήριος ράβδου
Συνδέστε το εργαλείο με την δέση αέρος ώστε η σωληνωτή βαλβίδα (A) να είναι στην θέση της και μετά μετρήστε την προεξοχή στην ωστήριος ράβδος.

Επιτυγχάνετε τις διαστάσεις των προδιαγραφών με το να τροχίσσετε την ωστήριος ράβδος. (B)

(NL) De drukstang afstellen
Sluit het gereedschap aan op de luchtleiding zodat de klepzitting (A) gesloten is, meet daarna hoe ver de drukstang uitsteekt. Slijp de drukstang af totdat de voorgeschreven afmetingen verkregen zijn.(B)

(DK) Stødstangens indstilling
Koble værktøjet til lufttilførselen så ventilæseden (A) er på plads og mål stødstangens fremspring.
Slip stødstangen for at opnå angiven størrelse.(B)

(N) Å innstille skubbstangen
Koble verktøyet til luftledningen slik at ventilsætet (A) sitter på plass, deretter mål skubbstangens fremspring.
Oppnå de spesifiserte dimensjonene ved å slippe skubbstangen.(B)

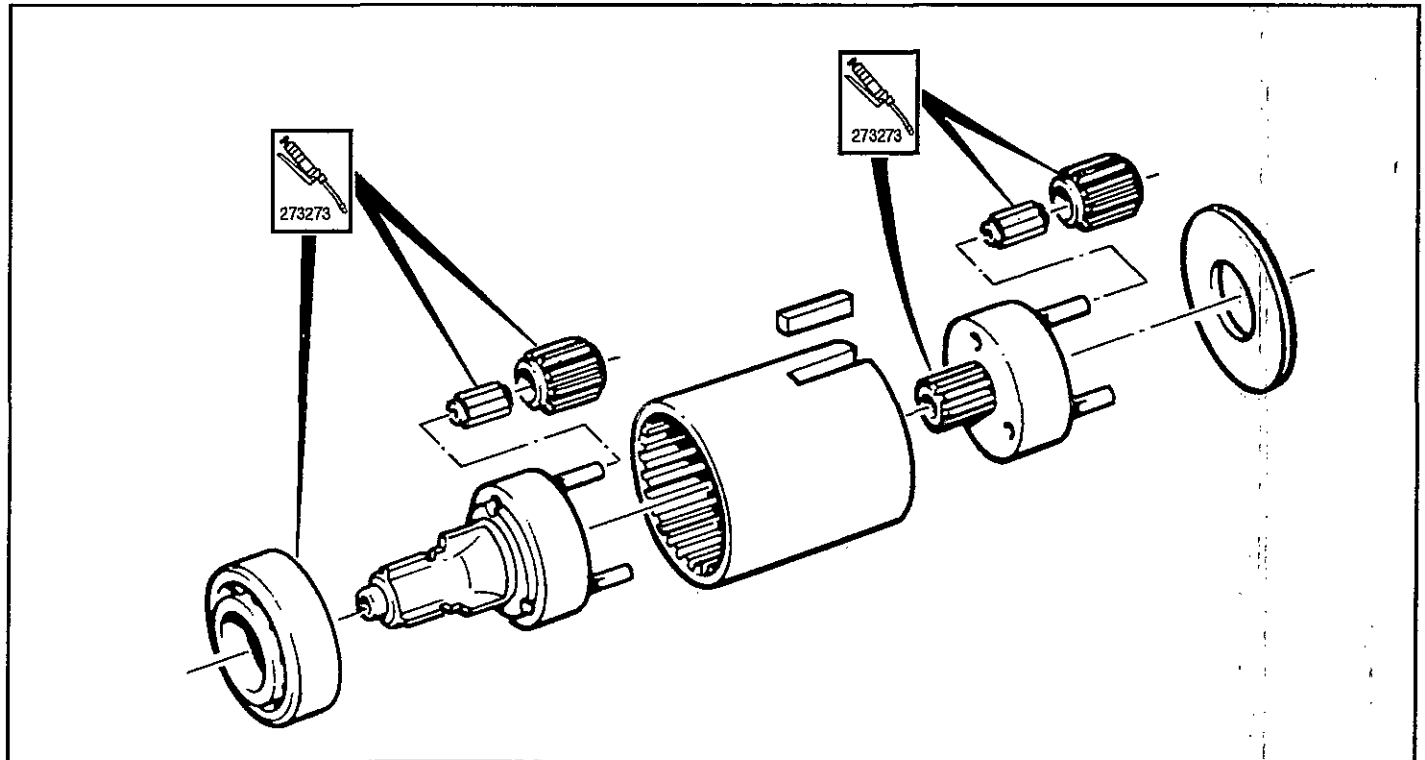
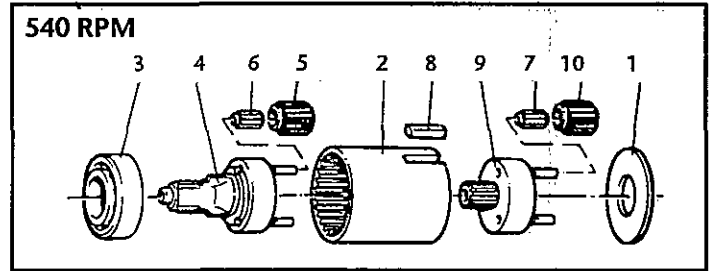
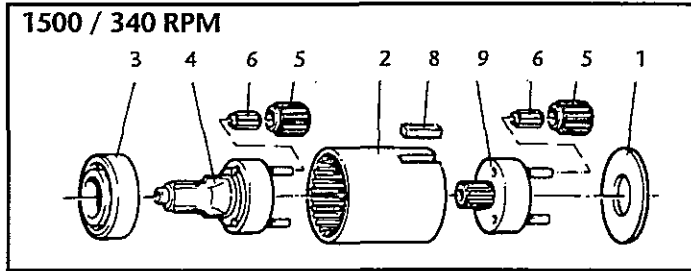
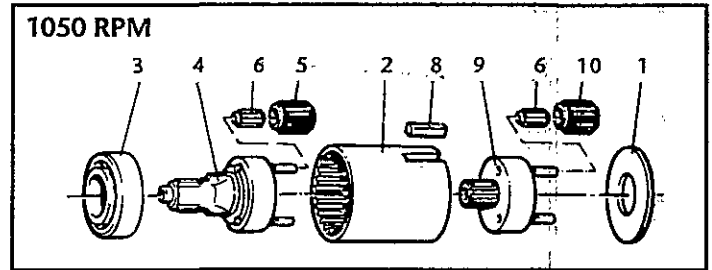
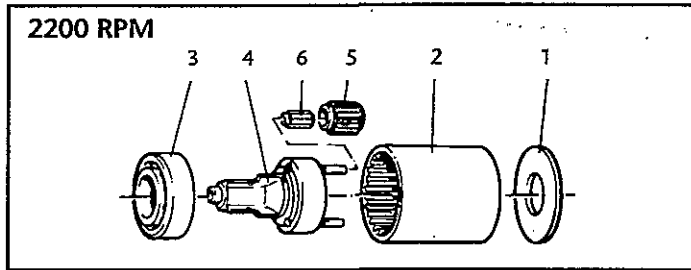
(S) Stötstångens inställning
Koppla verktyget till lufttillførseln så att ventillagret (A) är på plats. Mät sedan stötstångens utsprång.
Slipa stötstången för att erhålla anvisad storlek.(B)

(FIN) Työntötangan asettaminen
Kytke terä ilmanjanaan siten, että venttiilin istukka (A) asettuu paikoilleen, ja mittaa sitten työntötangan esiintyöntyvän osan pituus.
Hio työntötanko määritettyihin mittoihin tarvittaessa.(B)

2D89-LX Gearbox Parts List / Getriebe Teileliste / Boîte de Vitesse Liste de Pièces

Item Ps. Nr. No. Article	Part No Teil Nr. Référence	Qty Menge Qté	Item Ps. Nr. No. Article	Part No Teil Nr. Référence	Qty Menge Qté
1	375483	1	9	306643	1
2	306313	1		(1500 RPM)	1
	306823	1		(1050 RPM)	1
	(1500 RPM)			383933	1
	(1050 RPM)			(540 RPM)	1
	(540 RPM)			306673	1
	(340 RPM)			(340 RPM)	1
*3	251983	1		299093	3
4	306743	1	10	(1050 RPM)	3
	(2200 RPM)			(540 RPM)	
	(340 RPM)				
	306723	1			
	(1500 RPM)				
	(1050 RPM)				
	306743	1			
	(540 RPM)				
5	299113	3			
	(2200 RPM)				
	(540 RPM)				
	299113	6			
	(340 RPM)				
	299073	6			
	(1500 RPM)				
	299073	3	LX2200		
	(1100 RPM)				
*6	251663	3	369643	[3 1	
	(2200 RPM)			[6 3	
	(540 RPM)		LX1500, LX1050		
	251663	6		[3 1	
	(340 RPM)			[6 6	
	298893	6	LX540		
	(1500 RPM)			[3 1	
	(1050 RPM)			[6 3	
*7	298893	3	369663	[7 3	
	(540 RPM)				
8	312553	1	LX340		
	(1500 RPM)			[3 1	
	(1050 RPM)		369673	[6 6	
	(540 RPM)				
	(340 RPM)				

**SERVICE KITS
SERVICE-
AUSRÜSTUNGEN
TROUSSES
D'ENTRETIEN**



Desoutter



TM



Desoutter Limited. HP2 7DR, UK

2D89-LX

(GB) Servicing Instructions
Parts List
Operating Instructions

(D) Wartungsanleitung
Teilleiste
Bedienungsanleitung

(F) Manuel d'entretien
Liste de pièces
Manuel d'utilisation

(E) Instrucciones de Servicio
Listas de Repuestos
Instrucciones de Operación

(P) Instruções de Manutenção
Listas de Peças
Instruções de Funcionamento

(I) Istruzioni per la Manutenzione
Elenco delle Parti
Istruzioni Operative

(GR) Οδηγίες Συντήρησης
Κατάλογοι Ανταλλακτικών
Οδηγίες Λειτουργιάς

(NL) Onderhoudsinstructies
Onderdelenlijst
Bedieningsinstructies

(DK) Servicevejledning
Liste over dele
Betjeningsvejledning

(N) Serviceinstruksjoner
Delelister
Driftsinstruksjoner

(S) Serviceinstruktioner
Reservdelista
Bruksanvisning

(FIN) Huolto-ohjeet
Osaluettelo
Käyttöohjeet

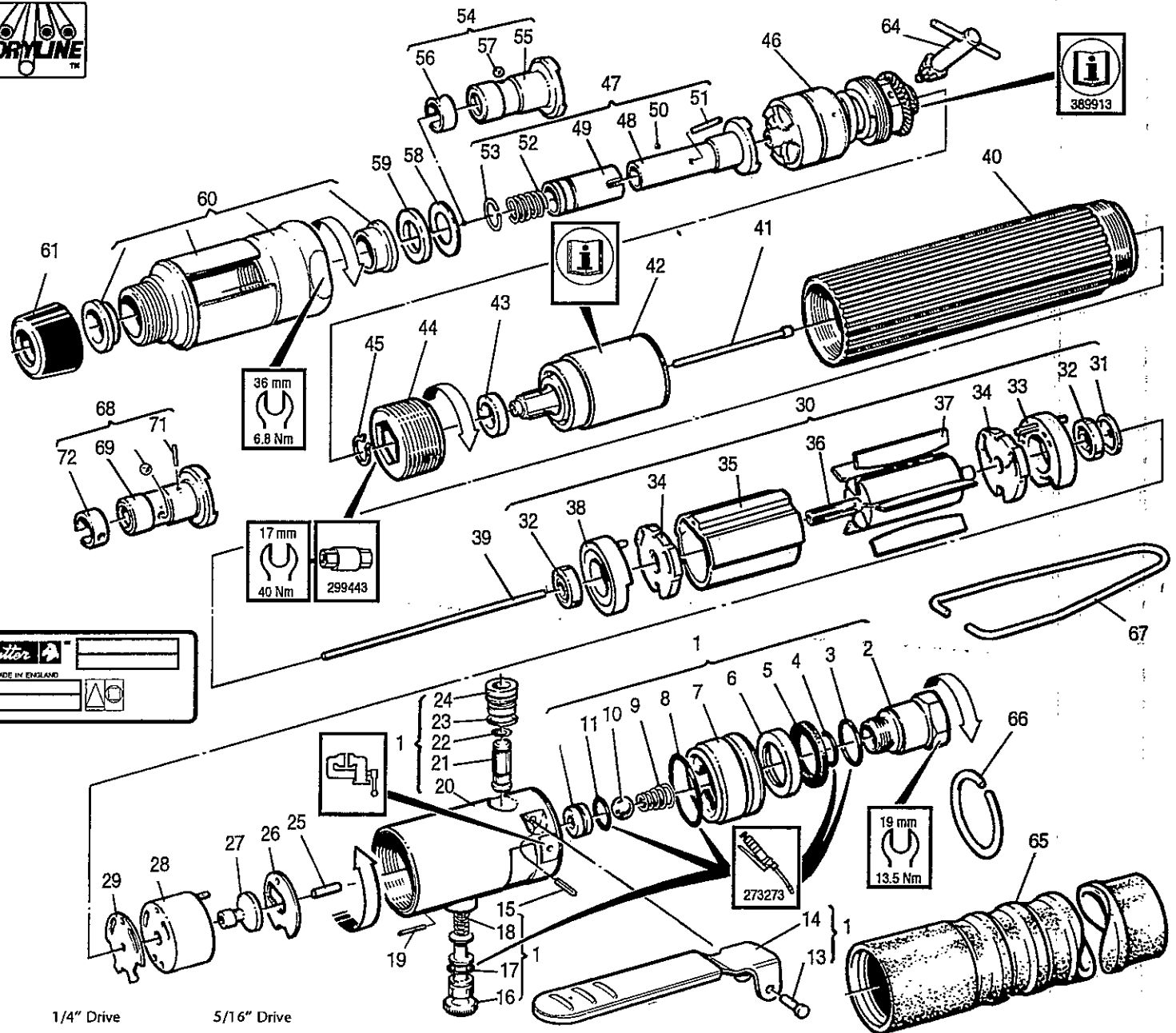
2D89-LX-340

1/4" Drive

1455694-C

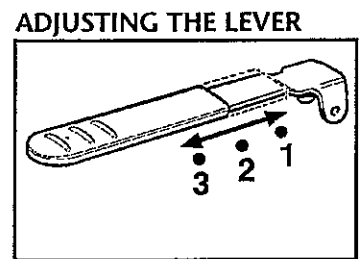
5/16" Drive

1455684-C



Item Ps. Nr. No. Article	Part No. Teil Nr. Référence	Qty Menge Qté	Item Ps. Nr. No. Article	Part No. Teil Nr. Référence	Qty Menge Qté	Item Ps. Nr. No. Article	Part No. Teil Nr. Référence	Qty Menge Qté
1	390873 (1/4" BSP)	1	34	254873	2	Supplied Accessories		
	390893 (1/4" NPT)	1	35	254853	1	65	29932	1
2	261503 (1/4" BSP)	1	36	306523 (1500RPM)	1	66	222453	1
	261513 (1/4" NPT)	1		30623 (540RPM)	1	67	235203	1
*3	268513	1	*37	30623	1	68	68448	1
*4	202313	1	38	304673 (1500RPM)	1		73318	1
5	252453	1	39	306553	1	69	39433	1
6	252483	1		306543 (1050RPM)		Optional Accessories		
7	252423	1		306543 (540RPM)		70	296973	1
*8	203423	1	40	292013	1	71	296633	1
9	388673	1	41	313253	1	72	66868	1
10	1693	1	42	301533	1	*73	256763	1
*11	500953	1	43	(see sheet 7)		74	86058	1
12	252383	1	44	306813	1	Service Kits		
13	235853	1	45	313103	1	Service-Ausrüstungen		
14	361673	1	*46	42353	1	Trousse d'Entretien		
*15	261223	1	47	389803	1	369623	3	1
16	252543	1		389813 (1500RPM)			4	1
*17	250913	1		389813 (1050RPM)			8	1
*18	252563	1		389813 (540RPM)			11	1
19	259953	1		370683	1		17	1
20	390853	1	48	370653	1		22	1
21	387943	1	49	370673	1		23	1
*22	261213	1	50	370673	1		26	1
*23	203713	1	51	280313	1		29	1
24	252533	1	*52	327143	1	367083	23	2
25	329483	1	53	301013	1		28	5
*26	287303	1	*54	200083	1		59	3
27	323003	1	55	298043	1		(0.08mm)	3
28	287293	1	56	296643	1		(0.13mm)	3
29	253003	1	57	86058	1		(0.25mm)	3
30	313403 (1500RPM)	1	58	72408	1		60	1
	313413 (1050RPM)	1	*59			369633	(2.0mm)	1
	313423 (540RPM)	1	61	388683	1		(2.4mm)	1
31	270493	1	62	74088	1		(3.2mm)	1
*32	33433	2	64	363363	1			
33	254883	1						

- (GB)** * Indicates normal replacement items. It is recommended that adequate stocks are held for servicing requirements. Always quote tool model number, serial number and spare part number when ordering spares.
- (D)** * Bedeutet normale Verschleißteile. Es empfiehlt sich eine angemessene Menge für Wartungszwecke auf Lager zu halten. Bei der Bestellung von Ersatzteilen, bitte immer angeben: Typennummer der Bohrmaschine, Werknummer und Ersatzteilnummer.
- (F)** * Le symbole astérisque (*) indique des articles de rechange normaux. Il est recommandé d'en conserver des stocks suffisants pour assurer toutes les opérations d'entretien courant. Lors de la commande de pièces de rechange, toujours citer le numéro de modèle de l'outillage, son numéro de série et le numéro de référence de chaque pièce de rechange.
- (E)** * Indica elementos de reposición regular. Se recomienda tener una cantidad adecuada de los mismos en reserva a efectos de mantenimiento. Al encargar piezas de recambio, siempre debe indicarse el número de modelo de la herramienta, su número de serie y el número de la pieza de recambio.
- (P)** * Indica itens que são substituídos regularmente. É recomendado que estoques adequados sejam mantidos para requisitos de manutenção. Cite sempre o número do modelo da ferramenta, número de série, e número da peça acessória quando pedindo acessórios.
- (I)** * L'asterisco denota ricambi normali. Si consiglia di mantenere scorte adeguate alle esigenze della manutenzione. Nell'ordinazione di ricambi citare il numero di modello dell'utensile, il numero di matricola e quello di catalogo del pezzo.
- (GR)** * Σημαίνει συνηθισμένα είδη (τεμάχια) για αντικατάσταση. Σας συνιστούμε να τηρείτε αρκετό απόθεμα από τα είδη που χρειάζονται αντικατάσταση. Όταν παραγγέλνετε ανταλλακτικά πάντα να γράφετε τον αριθμό μοντέλου του εργαλείου, τον αριθμό σειράς και τον αριθμό ανταλλακτικού.
- (NL)** * Betekent normale reserveartikelen. Het verdient aanbeveling om voldoende voor onderhoudsbehoeften voorradig te hebben. Bij bestelling van reserveonderdelen geef altijd modelnummer, volgnummer en reserveonderdeelnnummer van het werktuig op.
- (DK)** * Indikerer normale udskiftningsemner. Det anbefales at have rigelige forsyninger af dele til brug i forbindelse med eftersyn. Opgiv altid det korrekte værktøjsmodelnummer, serienummer og reservedelsnummer ved bestilling af reservedele.
- (N)** * Angir normale reservedeler. Det anbefales at tilstrekkelig antall reservedeler holdes på lager. Ved bestilling av deler må man alltid oppgi verktøyetts modellnr., serienr. og reservedelens nr.
- (S)** * Utmärker normala reservdelar. Vi rekommenderar att tillräckligt antal lagras för serviceändamål. Uppge alltid verktygets modellnummer, serienummer samt reservdelens nummer vid beställning av reservdelar.
- (FIN)** * Viittaa tavallisiin varaosiin. Suosittelemme, että riittävät määrät pidetään varastossa huoltotarpeita varten. Työkalun mallinnumero, sarjanumero ja varaosan numero on aina mainittava tilattaessa.



Desoutter



TM



Desoutter Limited. HP2 7DR, UK

2D89-LX

(GB) Servicing Instructions
Parts List
Operating Instructions

(D) Wartungsanleitung
Teilleiste
Bedienungsanleitung

(F) Manuel d'entretien
Liste de pièces
Manuel d'utilisation

(E) Instrucciones de Servicio
Listas de Repuestos
Instrucciones de Operación

(P) Instruções de Manutenção
Listas de Peças
Instruções de Funcionamento

(I) Istruzioni per la Manutenzione
Elenco delle Parti
Istruzioni Operative

(GR) Οδηγίες Συντήρησης
Κατάλογοι Ανταλλαχτικών
Οδηγίες Λειτουργίας

(NL) Onderhoudsinstructies
Onderdelenlijst
Bedieningsinstructies

(DK) Servicevejledning
Liste over dele
Betjeningsvejledning

(N) Serviceinstruksjoner
Delelister
Driftsinstruksjoner

(S) Serviceinstruktioner
Reservdelslista
Bruksanvisning

(FIN) Huolto-ohjeet
Osaluettelo
Käyttöohjeet

2D89-LX-1500
2D89-LX-1050
2D89-LX- 540

1/4" Drive	5/16" Drive
1455754-C	1455744-C
1455734-C	1455724-C
1455714-C	1455704-C

