

# Desoutter



Desoutter Limited, London NW9 6ND

## 2F89-PX

(GB) Servicing Instructions  
Parts List  
Operating Instructions

(D) Wartungsanleitung  
Teileliste  
Bedienungsanleitung

(F) Manuel d'entretien  
Liste de pièces  
Manuel d'utilisation

(E) Instrucciones de Servicio  
Listas de Repuestos  
Instrucciones de Operación

(P) Instruções de Manutenção  
Listas de Peças  
Instruções de Funcionamento

(I) Istruzioni per la Manutenzione  
Elenco delle Parti  
Istruzioni Operative

(GR) Οδηγίες Συντήρησης  
Κατάλογοι Ανταλλακτικών  
Οδηγίες Λειτουργίας

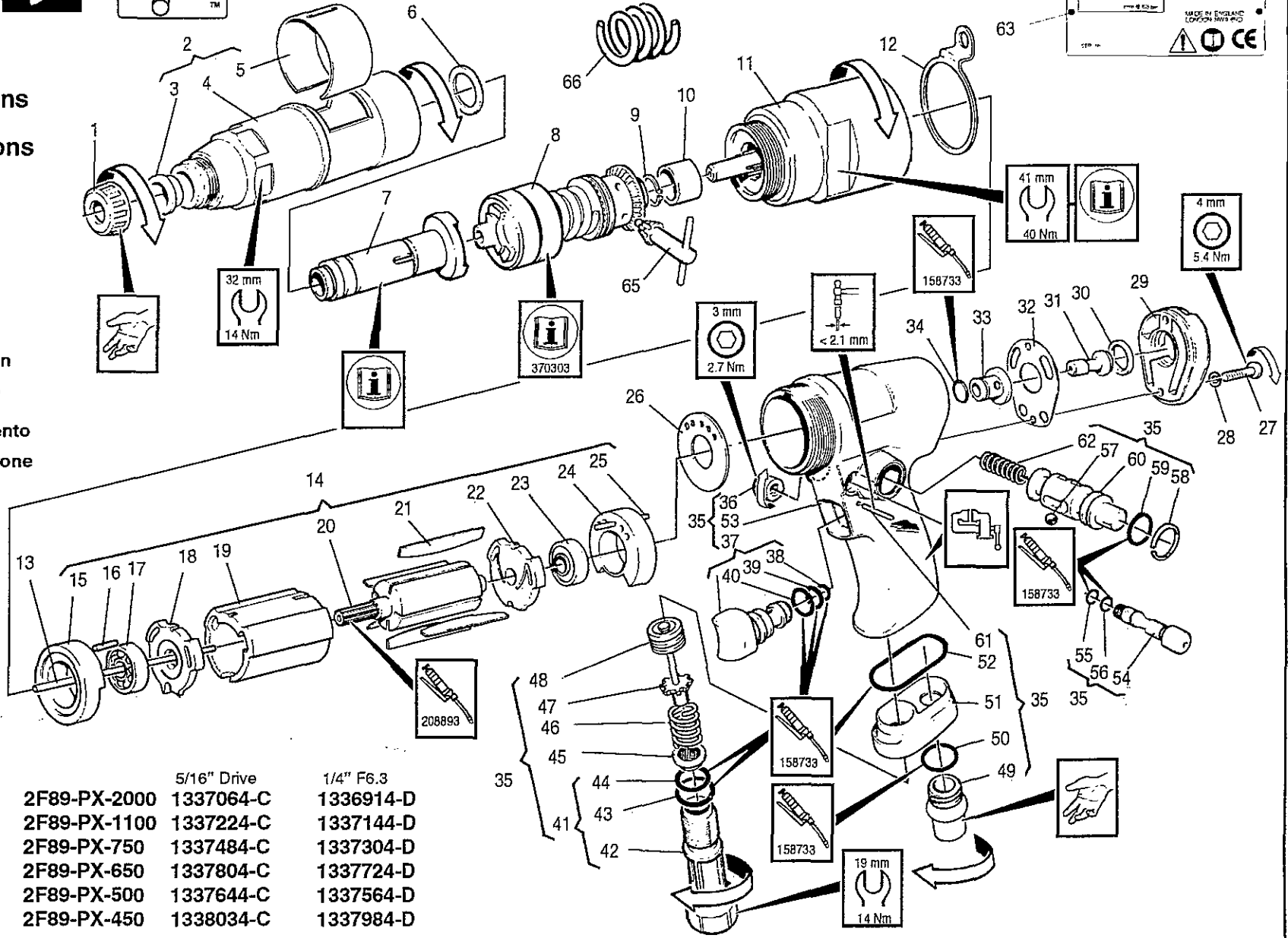
(NL) Onderhoudsinstructies  
Onderdelenlijst  
Bedieningsinstructies

(DK) Servicevejledning  
Liste over dele  
Betjeningsvejledning

(N) Serviceinstruksjoner  
Deleliste  
Driftsinstruksjoner

(S) Serviceinstruktioner  
Reservdelslista  
Bruksanvisning

(FIN) Huolto-ohjeet  
Osaluettelo  
Käyttöohjeet



	5/16" Drive	1/4" F6.3
2F89-PX-2000	1337064-C	1336914-D
2F89-PX-1100	1337224-C	1337144-D
2F89-PX-750	1337484-C	1337304-D
2F89-PX-650	1337804-C	1337724-D
2F89-PX-500	1337644-C	1337564-D
2F89-PX-450	1338034-C	1337984-D

# 2F89-PX – Parts List / Teileliste / Liste de pièces

Item Ps. Nr. No. Article	Part No. Teil Nr. Référence	Qty Menge Qté	Item Ps. Nr. No. Article	Part No. Teil Nr. Référence	Qty Menge Qté	Item Ps. Nr. No. Article	Part No. Teil Nr. Référence	Qty Menge Qté	
1	74088	1	13	218213	1	*38	43493	1	
2	301513	1		(1100RPM)		*39	43463	1	
	(2000RPM)			(750RPM)		*40	500973	1	
	(1100RPM)			(650RPM)		41	501193	1	
	(650RPM)			(500RPM)			(G <sup>1</sup> / <sub>4</sub> )		
	(450RPM)			(450RPM)			501213		
	301523	1	14	305763	1		( <sup>1</sup> / <sub>4</sub> "NPT)		
	(750RPM)			(2000RPM)		42	500353	1	
	(500RPM)			305743	1		(G <sup>1</sup> / <sub>4</sub> )		
3	73798	1		(1100RPM)			500343	1	
4	296873			(750RPM)			( <sup>1</sup> / <sub>4</sub> "NPT)		
	(2000RPM)			(650RPM)		*43	99853	1	
	(1000RPM)			305753	1	*44	500973	1	
	(650RPM)			(500RPM)		45	500933	1	
	(450RPM)			(450RPM)		46	18173	1	
	298913	1	15	256743	1	47	501093	1	
	(750RPM)			16	251693	1	48	345163	1
	(500RPM)			*17	64368	1	49	256433	1
5	161253	1	18	256733	1	*50	40533	1	
*6	74970033	AR	19	500203	1	51	251233	1	
	(0.003in)		20	251743	1	*52	52663	1	
	74970053	AR		(2000RPM)		53	255673	1	
	(0.005in)			251763	1	54	251253	1	
	74970103	AR		(1100RPM)		*55	278203	1	
	(0.010in)			(750RPM)		*56	251733	1	
7	4 of 17			(650RPM)		57	15043	1	
8	R 296713	1		251753	1	*58	255583	1	
	(2000RPM)			(500RPM)		*59	375663	1	
	(1100RPM)			(450RPM)		60	251273	1	
	G 297023		*21	305233	5	*61	500913	1	
	(650RPM)		22	256723	1	62	255593	1	
	(450RPM)		*23	500693	1	63	54853	2	
	N 297003	1	24	256713	1	64	363373	1	
	(750RPM)		25	256753	1				
	(500RPM)		*26	251873	1				
*9	42353	1	27	223113	2				
10	157513	1	28	185373	2				
11	3 of 17		29	251223	1				
12	270233	1	30	251703	1				
	(2000RPM)		31	323343	1				
	301533		*32	278793	1				
	(1100RPM)		33	235933	1				
	(650RPM)		*34	202323	1				
	(450RPM)		35	255623					
	301543			(G <sup>1</sup> / <sub>4</sub> )					
	(750RPM)			255633					
	(500RPM)			( <sup>1</sup> / <sub>4</sub> "NPT)					
13	222363	1	36	251263	1				
	(2000RPM)		37	251723	1				

### Supplied Accessories

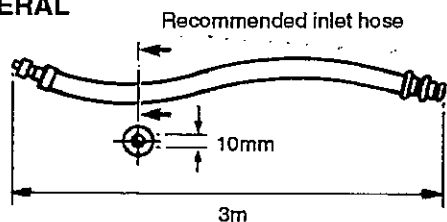
65	29932	1
66	73318(Blue)	1
	(1100RPM)	
	(650RPM)	
	(450RPM)	

- (GB)** \* Indicates normal replacement items. It is recommended that adequate stocks are held for servicing requirements. Always quote tool model number, serial number and spare part number when ordering spares.
- (D)** \* Bedeutet normale Verschleißteile. Es empfiehlt sich eine angemessene Menge für Wartungszwecke auf Lager zu halten. Bei der Bestellung von Ersatzteilen, bitte immer angeben: Typennummer der Bohrmaschine, Werknummer und Ersatzteilnummer.
- (F)** \* Le symbole astérisque (\*) indique des articles de rechange normaux. Il est recommandé d'en conserver des stocks suffisants pour assurer toutes les opérations d'entretien courant. Lors de la commande de pièces de rechange, toujours citer le numéro de modèle de l'outillage, son numéro de série et le numéro de référence de chaque pièce de rechange.
- (E)** \* Indica elementos de reposición regular. Se recomienda tener una cantidad adecuada de los mismos en reserva a efectos de mantenimiento. Al encargar piezas de recambio, siempre debe indicarse el número de modelo de la herramienta, su número de serie y el número de la pieza de recambio.
- (P)** \* Indica itens que são substituídos regularmente. É recomendado que estoques adequados sejam mantidos para requisitos de manutenção. Cite sempre o número do modelo da ferramenta, número de série, e número da peça acessória quando pedindo acessórios.
- (I)** \* L'asterisco denota ricambi normali. Si consiglia di mantenere scorte adeguate alle esigenze della manutenzione. Nell'ordinazione di ricambi citare il numero di modello dell'utensile, il numero di matricola e quello di catalogo del pezzo.
- (GR)** \* Σημαίνει συνηθισμένα είδη (τεμάχια) για αντικατάσταση. Σας συνιστούμε να τηρείτε αρκετό απόθεμα από τα είδη που χρειάζονται αντικατάσταση. Όταν παραγγέλνετε ανταλλακτικά πάντα να γράφετε τον αριθμό μοντέλου του εργαλείου, τον αριθμό σειράς και τον αριθμό ανταλλακτικού.
- (NL)** \* Betekent normale reserveartikelen. Het verdient aanbeveling om voldoende voor onderhoudsbehoeften voorradig te hebben. Bij bestelling van reserveonderdelen geef altijd modelnummer, volgnummer en reserveonderdeelnnummer van het werktuig op.
- (DK)** \* Indikerer normale udskiftningsemner. Det anbefales at have rigelige forsyninger af dele til brug i forbindelse med eftersyn. Opgiv altid det korrekte værktøjsmodelnummer, serienummer og reservedelsnummer ved bestilling af reservedele.
- (N)** \* Angir normale reservedeler. Det anbefales at tilstrekkelig antall reservedeler holdes på lager. Ved bestilling av deler må man alltid oppgi verktøyets modellnr., serienr. og reservedelens nr.
- (S)** \* Utmärker normala reservdelar. Vi rekommenderar att tillräckligt antal lagras för serviceändamål. Uppge alltid verktygets modellnummer, serienummer samt reservdelens nummer vid beställning av reservdelar.
- (FIN)** \* Viittaa tavallisiin varaosiin. Suosittelemme, että riittävä määrä pidetään varastossa huoltotarpeita varten. Työkalun mallinnumero, sarjanumero ja varaosan numero on aina mainittava tilattaessa.

**STATEMENT OF USE**

Product is designed for installing and removing threaded fasteners in wood, metal and plastic.

**GENERAL**



**Lubrication**

This is a DRYLINE tool designed to operate on a totally dry air line i.e. one without any oil or water moisture. DRYLINE tools can also operate on a lubricated or partly lubricated air line thus allowing easy interchangeability with existing installations. If lubrication is required an air line lubricator should be fitted down stream of the filter. Use ISO VG 15.

- 158733 = Molycote PG75
- 208893 = Rocol M204G
- 273273 = BP Q5618
- 273283 = BP FG00EP
- 27662 = ISO VG 15

**DATA**

Maximum air pressure Pmax = 6.3 bar  
 Minimum air pressure Pmin = 2.0 bar  
 Sound Pressure Level (dBA) = 82 ± 2 re. CAGI-PNEUROP  
 Test code  
 Vibration Range (m/sec<sup>2</sup>) = 2.5  
 re. ISO 8662

Weight  
 2F89-PX-2000 = 1.3kg  
 2F89-PX-1100/650/450 = 1.4kg  
 2F89-PX-750/500 = 1.5kg

	<b>WARNING</b>
BEFORE OPERATING THIS TOOL, READ AND UNDERSTAND PNEUMATIC SCREWDRIVER SAFETY INSTRUCTIONS PART NO. 37027.3	

**Accessories**

A wide range of accessories are available and a suitable item should be selected from the relevant Desoutter Catalogue.

**OPERATING**

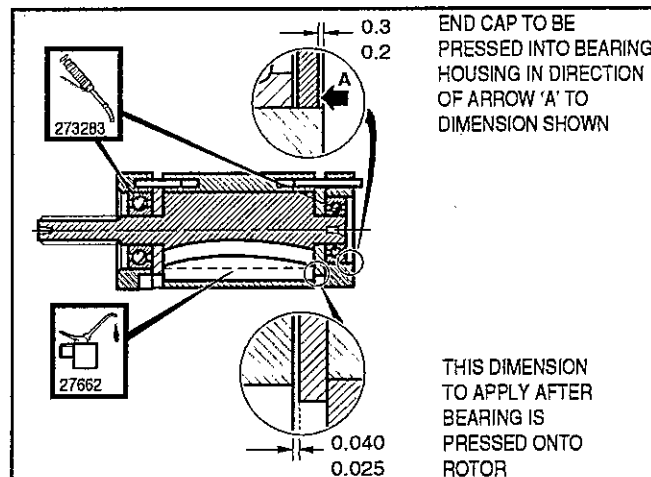
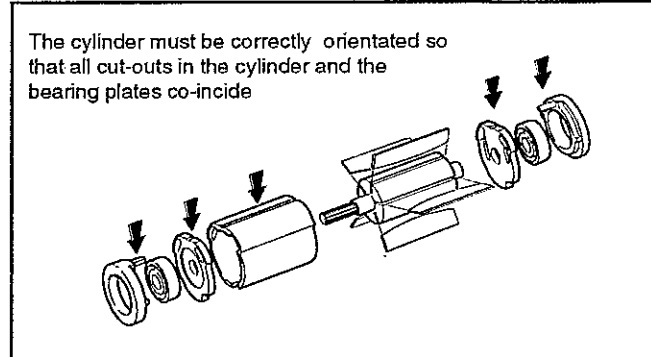
With the correct accessory fitted, connect the tool to the air supply. Grip the tool then press onto the fixing that is to be tightened and depress the throttle control. The motor will start and tighten the fixing to the required torque set by adjusting the tension on the clutch spring. At this point the internal drive is disengaged and the air to the motor cut off. Release throttle control and remove tool from fixing to allow it to reset. To engage reverse rotation; press the reverse button and toggle lock pin.

**MAINTENANCE INSTRUCTIONS**

1. Service should be carried out at intervals of 1000 hours' use.
2. All torque figures ± 10%.
3. Replace as necessary all 'O' rings, bearings and rotor blades. See service kits.
4. When disposing of components, lubricants, etc ... ensure that the relevant safety procedures are carried out.
5. Indicates direction of dismantling.
6. Torque values stated are for assembly.

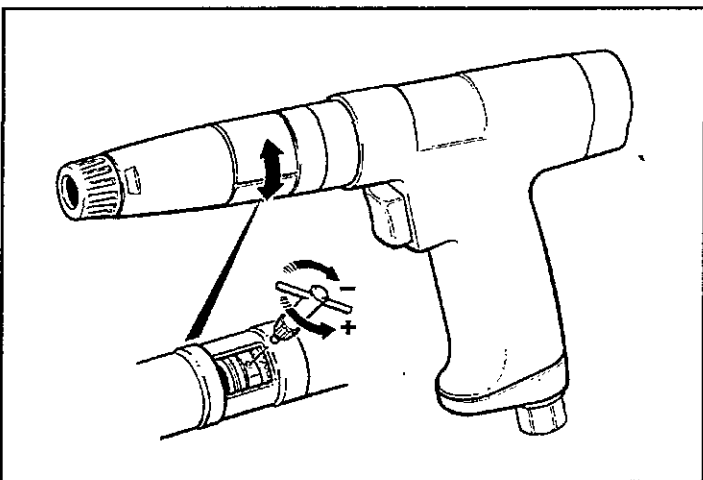
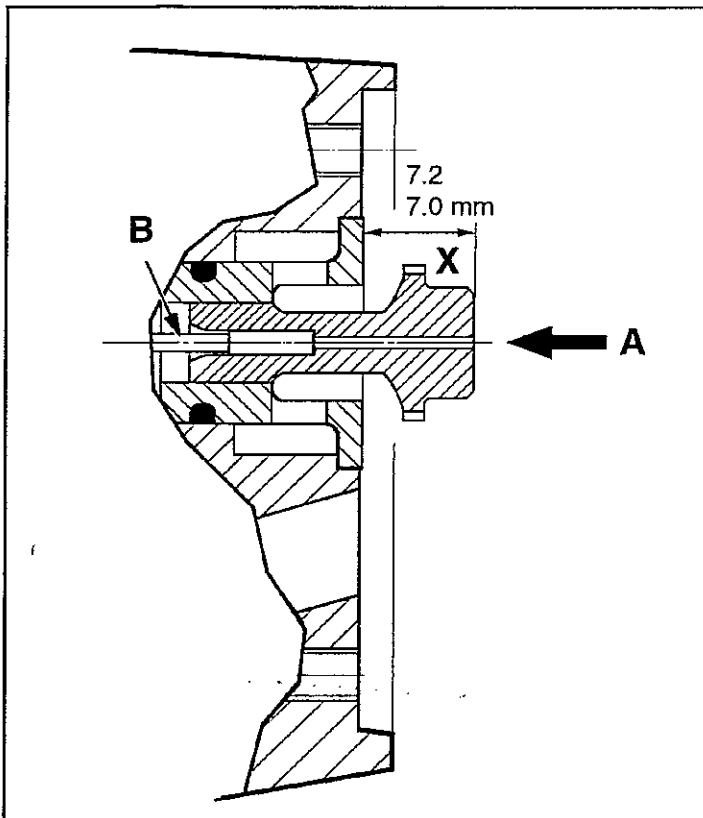
	<b>WARNING</b>	
THE ROTOR BLADES IN THIS TOOL HAVE A PTFE CONTENT. THE NORMAL HEALTH AND SAFETY RECOMMENDATIONS CONCERNING PTFE MUST BE OBSERVED WHEN HANDLING THESE ROTOR BLADES.		
(1) DO NOT SMOKE. (2) MOTOR COMPONENTS MUST BE WASHED WITH CLEANING FLUID AND NOT BLOWN CLEAR WITH AN AIR LINE. (3) THE SILENCER MUST BE REPLACED WHEN DIRTY, DO NOT CLEAN AND RE-USE. (4) WASH HANDS BEFORE COMMENCING ANY OTHER ACTIVITY.		

**CYLINDER ORIENTATION**



©Copyright 1995 Desoutter, London NW9 6ND, UK. All rights reserved. Any unauthorized use or copying of the contents or part thereof is prohibited. This applies in particular to trademarks, model denominations, part numbers and drawings. Use only authorized parts. Any damage or malfunction caused by the use of unauthorized parts is not covered by Warranty or Product Liability.





**(GB) Setting the push-rod**

Apply shims and spacers to obtain a maximum axial clutch movement of 0.13mm.

Note: Shims must be adjacent to face of bit holder. Apply pressure in direction of arrow (A). Apply pressure to push rod (B) until a hard stop is felt. Measure dimension X.

Obtain the specified dimension by grinding the push rod. (B)

**(D) Schubstange einstellen**

Verwenden Sie Distanz- und Abstandscheiben, um eine maximale Längsbewegung der Kupplung von 0,13mm zu erreichen.

Anmerkung: Distanzscheiben müssen neben der Stirnfläche des Drehzahnhalters sein. Wenden Sie einen Druck an Schubstange (B) gegen die Feder an bis ein Endhaltpunkt gefühlt werden kann. -Messen Sie Maß X.

Durch Schleifen der Schubstange (B) Sollmaß erreichen.

**(F) Réglage du piston de poussée**

Utiliser des cales et des entretoises afin d'obtenir sur l'embrayage, un jeu axial maximum de 0,13 mm

Remarque: les cales doivent être placées sur le côté du support outil. Appliquer une pression selon le sens indiqué par la flèche (A). Appliquer une pression sur le piston depoussée (B) contre le ressort jusqu'à sentir la butée. Puis prendre la mesure de la cote X.

Meuler le piston de poussée (B) jusqu'à l'obtention de la cote spécifiée.

**(E) Ajustar la barra de presión**

Aplique chapas de relleno y espaciadores para obtener un movimiento axial de embrague máximo de 0,13mm.

Nota: Las chapas de relleno deben estar adyacentes a la cara del portabarrenas. Ejercer a presión en la dirección indicada por la flecha (A). Ejercer a presión sobre la varilla empujadora (B) contra el resorte hasta que sienta una parada en seco.

Mida la dimensión X.

Para obtener la dimensión especificada rectifique la varilla empujadora (B)

**(P) Ajuste do tirante**

Use calços e espaçadores para obter um máximo movimento axial da embraiagem de 0.13mm.

Atenção: Calços precisam estar adjacente à face do soquete da broca. Aplique pressão em direção à seta (A). Pressione o tirante B contra a mola até sentir uma parada súbita. Mede a dimensão X.

Estreite o tirante B para obter a dimensão especificada.

**(I) Regolazione dell'asta di spinta**

Inserire gli spessori ed i distanziatori per ottenere un movimento assiale massimo della frizione di 0,13 mm.

Nota: gli spessori devono essere adiacenti alla superficie del portautensili. Applicare una pressione nella direzione della freccia (A). Applicare una pressione per spingere l'asta (B) contro la molla fino a quando non si sente un arresto deciso. Misurare la dimensione X.

Ottenere la dimensione specificata molando l'asta di spinta (B).

**(GR) Τοποθετήστε σφήνες και διαχωριστές για μέγιστη αξονική κίνηση συμπλέκτη 0,13 χιλστ. Σημείωση: Οι σφήνες πρέπει να είναι κοντά στην επιφάνεια της θέσης του τρυπανιού. Εξασκείστε πίεση προς την κατεύθυνση του τόξου Α. Εξασκείστε πίεση για να σπρώξετε τη ράβδο Β πάνω στο ελατήριο έως ότου σταματήσει να προχωρεί. Μετρήστε τη διάσταση Χ.**

Μπορείτε να πάρετε την καθορισμένη διάσταση αφού τροχώσετε την ωστική ράβδο Β.

**(NL) De drukstang afstellen**

Vulplaatjes en afstandsstukken aanbrengen om een maximale koppeling verplaatsing te bewerkstelligen van 0,13mm OPM: Vulplaatjes moeten tege bihouder aan voorkant zitten. Druk uit oefenen in richting van pijl (A). Druk tegen de veer in uit oefenen op drukstang (B) tot een harde aanslag voelbaar wordt. - Afmeting 'X' meten.

Drukstang (B) afslippen tot de gespecificeerde afmeting verkregen is.

**(DK) Stødstangens indstilling**

Brug mellemlæg og afstandsholdere for at opnå maksimal aksial koblingsbevægelse på 0,13 mm. OBS: Mellemlægget skal sidde tæt på forsiden af værktøjsholderen. Anbring trykket i (A)-pilens retning. Brug tryk på trykstang (B) mod fjederen til den støder mod noget hårdt. Mål dimension X. Den specificerede dimension opnås ved at slibe trykstang (B).

**(N) Å innstille skubbestangen.**

Bruk mellomlegg og avstandsholdere for å oppnå maksimal aksial koblingsbevegelse på 0,13mm.

Merk: mellomlegg må ligge nær opptil fronten av borholderen. Bruk trykk i retning av pil (A). Bruk trykk for å skyve stang (B) mot fjæren til den støter mot noe hardt. - Mål dimensjon X.

Oppnå den spesifiserte dimensjonen ved å slippe støtstang (B).

**(S) Stötstängens inställning**

Använd mellanlägg och avståndsbrickor för att uppnå maximal axialrörelse på kopplingen av 0,13 mm.

Obs.: Mellanlägg måste befinna sig intill framsidan paverktygshallaren. Anbringa tryck i (A) -pilens riktning. Anbringa tryck på tryckstången (B) mot fjädern till dess att ett bestämt stopp avkänns. - Mät upp dimension X.

Uppnå specificerad dimension genom att slipa avtryckstången (B).

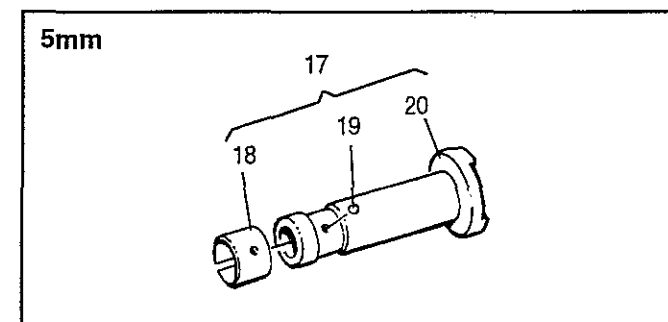
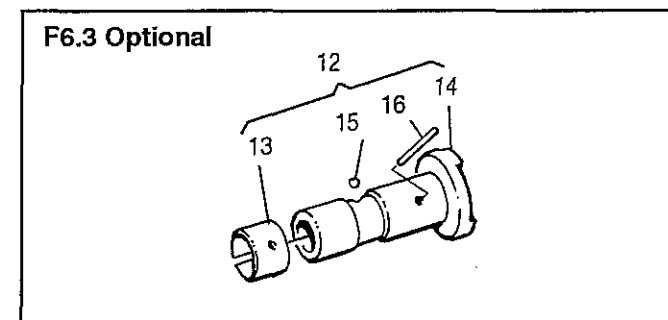
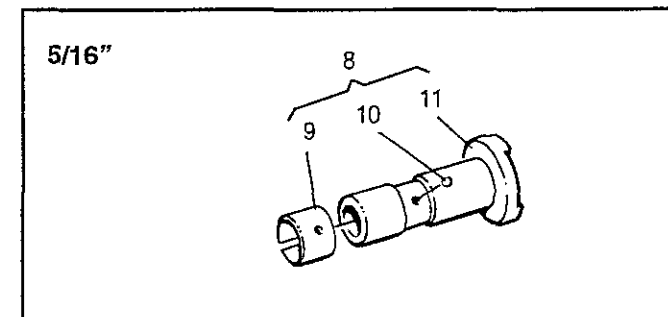
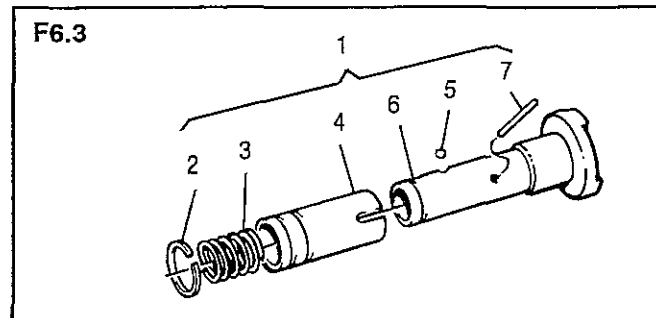
**(FIN) Työntötangon asettaminen**

Aseta kiilat ja välikappaleet saavuttaaksesi 0,13mm:n maksimi-akσιαalikytkinliikunnan. Huom: kiilatäytyy ollateräpidikkeenkyljen viereinen.

Aseta paine nuolen (A) suuntaan. Aseta paine työntötankoon (B) joustavastaan kunnes tuntuu tiukka pysäytys. -Mittaa mita X. Saavuta spesifioitu mita hiomalla työntötankoa (B).

# 2F89-PX Parts List / Teilleiste / Liste de Pièces

Item Ps. Nr. No. Article	Part No Teil Nr. Référence	Qty Menge Qté
<b>F.6.3</b>		
1	370683	1
2	200083	1
3	301013	1
4	370673	1
5	3543	1
6	370653	1
7	301043	1
<b>5/16"</b>		
8	298043	1
9	86058	1
10	72408	1
11	296643	1
<b>F.6.3 - optional</b>		
12	296973	1
13	86058	1
14	296633	1
15	66868	1
16	256763	1
<b>5mm</b>		
17	311463	1
18	86058	1
19	81233	1
20	311473	1



# 2F89-PX Gearbox Parts List / Getriebe Teiliste / Boîte de Vitesse Liste de Pièces

Item Ps. Nr. No. Article	Part No. Teil Nr. Référence	Qty Menge Qté	Item Ps. Nr. No. Article	Part No. Teil Nr. Référence	Qty Menge Qté
1	251523 (2000RPM)	1	9	251483 (750RPM)	1
	251513 (1100RPM)	1		(650RPM)	
	(750RPM)			(500RPM)	
	(650RPM)		10	251433 (1100 RPM)	1
	(500RPM)			251953 (750RPM)	1
	(450RPM)			251413 (650)RPM	
*2	251983	1		(450RPM)	
3	500763	1		251573 (500RPM)	
4	500813	1		(500RPM)	
5	272783	1		251403 (1100RPM)	3
	(2000RPM)		*11	(750RPM)	
	(750RPM)			(650RPM)	
	(650RPM)			251963 (500RPM)	3
	(500RPM)			(450RPM)	
	(450RPM)			251673 (1100RPM)	3
	251943 (1100RPM)	1		(750RPM)	
6	251973 (2000RPM)	3		(650RPM)	
	251403 (1100RPM)	3	12	251663 (500RPM)	3
	(750RPM)			(450RPM)	
	(650RPM)			501943 (2000RPM)	1
	251963 (500RPM)	3		251473 (1100RPM)	1
	(450RPM)			(750RPM)	
*7	251663 (2000RPM)	3	13	251473 (1100RPM)	1
	(750RPM)			(750RPM)	
	(500RPM)			(650RPM)	
	(2000RPM)			(500RPM)	
	(450RPM)			(450RPM)	
	251673 (1100RPM)	3		251993 (2000RPM)	1
	(650RPM)			251373 (1100RPM)	1
8	301533 (2000RPM)	1	14	251393 (650RPM)	1
	(1100RPM)		16	251393 (750RPM)	1
	(650RPM)			(650RPM)	
	(450RPM)				
	301543 (750RPM)	1			
	(500RPM)				

